

COMPANY PROFILE

& LOGISTICS CATALOG



SOUTH FALCON

ENGINEERING YOUR TARGET



SALES@SOUTHFALCON.COM



WWW.SOUTHFALCON.COM



SOUTH FALCON

TABLE OF CONTENTS

South Falcon	5
What we are about?	5
Logistics Services	6
Our Mission.....	7
Our Culture.....	7
Samples Policy	7
Contact Us.....	7
Cement Products	8
1) CEMI 42.5 N & CEMI 42.5 R.....	8
2) CEMI - SR542.5 N.....	10
3) CEMI 52.5 N.....	12
4) CEM II B-L 42.5 N.....	14
5) CEMII B-L 32.5 N.....	16
6) Clinker.....	18
Gypsum Products	19
1) Multi-purpose fast setting gypsum binder.....	19
2) Fast Setting Moulding Binder.....	21
3) Medium setting Moulding Binder.....	23
4) High-Quality Molding Plaster.....	25
5) Molding Plaster.....	27
6) Moisture Resistant Gypsum Board.....	29
7) Fire Resistant Gypsum Board.....	30
8) Regular Gypsum Board.....	31
Red Bricks & Clay products	32
1) Egyptian Clay Bricks 25 x 12 x 6.5.....	32
2) Double Clay Bricks 25 x 12 x 13.....	33
3) European Clay Bricks 25 x 12 x 15.....	34
4) European Clay Bricks 33 x 12 x 15.....	35
5) European Clay Bricks 200 20x26x12.....	36

6) European Clay Bricks 250 26x25x12.....	37
7) Roman Roofing Tiles	38
8) Ridge Roofing Tiles	38
9) Fantazia Roofing Tiles	39
Aggregate & Sand	40
1) Aggregates	40
2) Construction Sand.....	40
3) Foundry (Molding) Sand.....	42
Concrete Blocks	43
1) Building Stone.....	44
2) Solid block.....	45
3) Hollow block	46
3) Kerbstone.....	47
4) U Block.....	48
5) Hourdi block	49
6) U Block.....	50
7) Insulating block	51
8) Kerbstone.....	52
9) Rusto Paver.....	53
10) Rumba Paver	54
11) Rumba Paver.....	55
12) Behaton Paver	56
13) Rectangular Paver.....	57
14) Hexagonal Paver	58
14) Uni Paver	59
15) Decor Paver	60
16) Classico Paver.....	61
Natural Stones	62
1) GRANITE	64
2) MARBLE.....	66
3) LIMESTONE	68
4) SANDSTONE	69
Silica & Minerals	70

1) Silica Sand for Water Filtration	71
2) Silica sand for Glass	73
3) Silica Flour "Silica Powder"	75
4) Quartz Powder	76
5) Feldspar.....	77
6) Calcite Lumps	78
7) Limestone Granules/Powder Feed Grade.....	79
Ceramic & Porcelain	80
1) Our Brands	80
2) Applications.....	81
3) Surface Effects.....	83
4) Sizes	83
5) 2 Cm Tile.....	84
6) Extreme Porcelain	84

SOUTH FALCON

WHAT WE ARE ABOUT?

In a global market environment that presented near-term challenges that have to be navigated through it, South Falcon® deliver the solutions for the next industrial era to our customers.

Established in the year 2015, in Cairo, Egypt, South Falcon® has maintained a steady pace building a world-class experience base across various strategic focus areas like Oil, Gas, Power, Industrial, and Infrastructure Projects and logistic services.



South Falcon® activities cover:

- **Logistic Services and Material supply.**
- **Project Management**
- **EPCI of Civil, Electromechanical, and E&I for:-**
 - **Oil Refineries, Oil Treatment, Gas Processing, Gas Liquefaction.**
 - **Pipe Coating (Anti-Corrosion & Weight Coating).**
 - **Power Plants**
 - **Substations**
 - **IT & Telecommunications networks**
 - **Water Treatments**
 - **Heavy Civil, Roads, Bridges, and buildings**

LOGISTICS SERVICES

We, South Falcon® have an advance logistic department with several sub-divisions incorporated in it that provide efficient door to door solutions for the distribution of goods. Today, we are in the position to deliver the cargo to the customers in any part of the world on time and within their budget with the best possible shipping lines. We have a separate documentation department which arranges export documents on the behalf of the clients.



Our products and services are used for a variety of purposes, from major infrastructure projects (roads, airports, hospitals, schools, etc.) to housing, commercial buildings and social projects. We actively promote new products that will improve quality and durability for our customers, as well as methods and materials that will make construction easier or contribute to reduced environmental impact. Also, our product quality matches the international quality standards to keep our customers satisfied. SGS, VERITAS or any other Inspection Companies can inspect your shipment.

Furthermore, to attain optimum contentment of our customers we are offering our entire range of products at market-leading prices. That is because we believe it is not just about the end product, but more importantly, the added value that will lead to a long-lasting relationship with our clients.

OUR MISSION

We are working with the mission to provide qualitative raw material and cost-effective logistic solutions after understanding the business dynamics, being market-oriented and consider our clients as business partners.

OUR CULTURE

- To Ensure customer satisfaction by offering a wide variety of world class, unique products.
- To develop a set of corporate goals for quality, durability, and on-time delivery.
- To continue to pursue a philosophy of being the first to provide the latest and continue to be committed to what is new and innovative.

SAMPLES POLICY

- We can arrange samples easily and Send it by DHL, FEDEX, or ARAMEX.
- Courier cost on buyer cost.

CONTACT US

[Visit our Website](#)

<http://www.southfalcon.com>

[E-mail:-](#)

sales@southfalcon.com

[Tel:-](#)

- +20-100-3679-231
- +20-101-3824-666

CEMENT PRODUCTS

Cement is the main basic ingredient of concrete. Whether in bags or in bulk, South Falcon provides its customers with high-quality branded cement products for their construction needs.

1) CEMI 42.5 N & CEMI 42.5 R



It is a general purpose Portland cement which is known and popular all over the world. It is the result mainly from crushing of the clinker and gypsum to fulfill the requirements of the standard specifications the ES 4756-1/2013 and EN 197-1/2011.

Characteristics

It is produced according to the Egyptian standards ES 4756/1-2013 and complies with the European specifications EN 197/1-2011

Physical characteristics

Cement Standard Specifications Limits

Property	CEMI 42.5 N	CEMI 42.5 R
Initial setting time (min)	≥ 60	≥ 60
Soundness (expansion) mm	≤ 10	≤ 10
Compressive strength 2D (Mpa)	≥ 10	≥ 20
Compressive strength 28D (Mpa)	≥ 42.5	≥ 42.5

Chemical Characteristics

Cement Standard Specifications Limits

Property	CEMI 42.5 N	CEMI 42.5 R
Loss of ignition	≤ 5 %	≤ 5 %
Insoluble residues	≤ 5 %	≤ 5 %
sulfate (SO ₃)	≤ 3.5 %	≤ 4 %
Chloride content (CL ⁻)	≤ 0.1 %	≤ 0.1 %

Who May be Interested

- Ready-mix companies
- General contractors
- Precast companies
- Pre-blending companies

Applications

- General purpose cement (reinforced concrete structures, bridges, railway infrastructure, tanks & reservoirs, culverts, pipes, floors, pavement, sidewalks and masonry units).
- All uses where the special properties of other type are not required
- Where high compressive strength is required
- It is used where cement concrete is not subject to specific exposures, such as sulfate attack from soil or water

Available in

- 50 kg Bag
- Big Bag
- Bulk



2) CEMI - SR542.5 N



Sulfate-resistant cement is recommended to be used in concrete exposed to severe sulfate action. It is the result mainly from crushing of the clinker and gypsum to fulfill the requirements of the standard specifications the ES 4756-1/2013 and EN 197-1/2011. The cement's sulfate resistance is due to its low tricalcium aluminate (C3A) content.

Characteristics

It is produced according to the Egyptian standards ES 4756/1-2013 and complies with the European specifications EN 197/1-2011.

Physical characteristics

Cement Standard Specifications Limits

Initial setting time (min)	≥ 60
Soundness (expansion) mm	≤ 10
Compressive strength 2D (Mpa)	≥ 10
Compressive strength 28D (Mpa)	≥ 42

Chemical Characteristics

Cement Standard Specifications Limits

Loss of ignition	≤ 5 %
Insoluble residues	≤ 5 %
Sulfate (SO ₃)	≤ 3 %
Chloride content (CL-)	≤ 0.1 %

Who May be Interested

- Ready-mix companies
- General contractors
- Precast companies

Applications

- Concrete works subjected to aggressive soils or groundwater and where high sulfate attack is expected, It is also suitable for foundation work.
- Sewage works
- Precast sewage water pipe and manholes

Available in

- 50 kg Bag
- Big Bag
- Bulk

3) CEMI 52.5 N



White Portland cement is a Portland cement that differs from grey cement mainly in color. It is made of selected raw materials containing negligible amounts of iron and manganese oxides and produced according to the standard specifications the ES 4756-1/2013 and EN 197-1/2011.

Characteristics

It is produced according to the Egyptian standards ES 4756/1-2013 and complies with the European specifications EN 197/1-2011

Physical characteristics

Cement Standard Specifications Limits

Initial setting time (min)	≥ 45
Soundness (expansion) mm	≤ 10
Compressive strength 2D (Mpa)	≥ 20
Compressive strength 28D (Mpa)	≥ 52.5

Chemical Characteristics

Cement Standard Specifications Limits

Loss of ignition	≤ 5 %
Insoluble residues	≤ 5 %
Sulfate (SO ₃)	≤ 4 %
Chloride content (CL-)	≤ 0.1 %

Who May be Interested

- Architects.
- General Contractors.
- Precast companies.
- Finishing and decoration contractors.

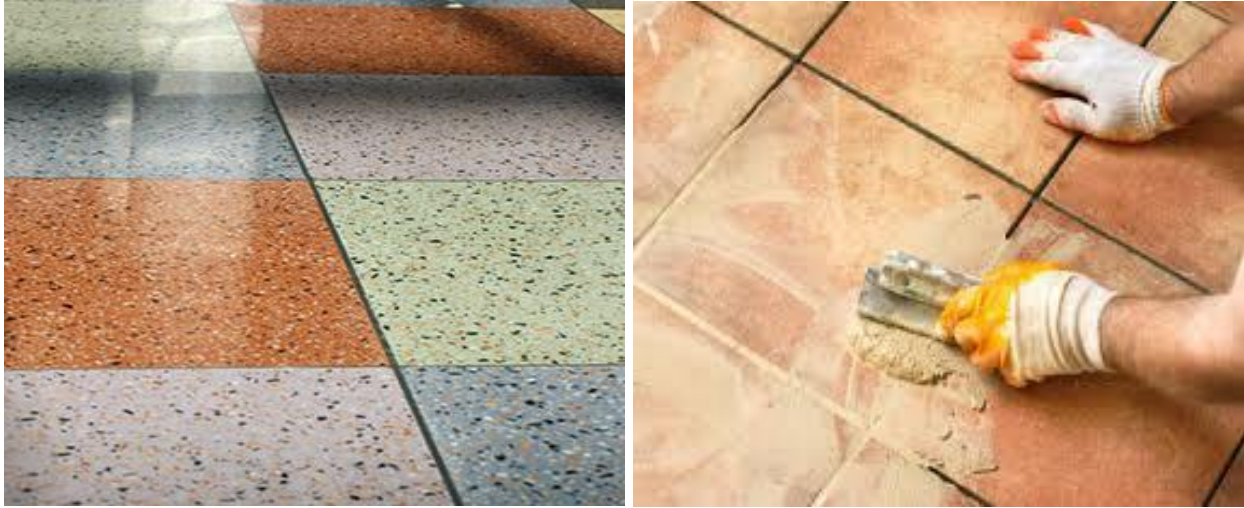
Applications

- High compressive strength structural concrete applications.
- White or colored decorative concrete and mortars.
- Precast curtain walls and facing panels.
- Terrazzo surfaces, Stucco, Cement paint, Tile grouts.

Available in

- 50 kg Bag
- Big Bag
- Bulk

4) CEM II B-L 42.5 N



It is a composite Portland cement pertains to the main type of CEM II family while it differs from gray cement mainly in color. It is made of selected raw materials containing very small amounts of iron and manganese oxides and produced according to the standard specifications the ES 4756-1/2013 and EN 197-1/2011.

Characteristics

It is produced according to the Egyptian standards ES 4756/1-2013 and complies with the European specifications EN 197/1-2011.

Physical characteristics

Cement Standard Specifications Limits

Initial setting time (min)	≥ 60
Soundness (expansion) mm	≤ 10
Compressive strength 2D (Mpa)	≥ 10
Compressive strength 28D (Mpa)	≥ 42.5

Chemical Characteristics

Cement Standard Specifications Limits

Sulfate (SO ₃)	≤ 3.5 %
Chloride content (CL-)	≤ 0.1 %

Who May be Interested

- Architects
- General contractors
- Precast companies.
- Finishing and decoration contractors

Applications

- Non-structural concrete applications.
- White or colored decorative concrete and mortars.
- Facing panels.
- Terrazzo surfaces, stucco, cement paint, tile grouts.

Available in

- 50 kg Bag
- Big Bag
- Bulk

5) CEMII B-L 32.5 N



It is a Portland composite cement pertains to the main type of CEM II family which contains 19 different kinds of Cement, according to the standard specifications the ES 4756-1/2013 and EN 197-1/2011.

Characteristics

It is produced according to the Egyptian standards ES 4756/1-2013 and complies with the European specifications EN 197/1-2011.

Physical characteristics:

Cement Standard Specifications Limits

Initial setting time (min)	≥ 75
Soundness (expansion) mm	≤ 10
Compressive strength 7D (Mpa)	≥ 16
Compressive strength 28D (Mpa)	≥ 32.5

Chemical Characteristics:

Cement Standard Specifications Limits

Sulfate (SO ₃)	≤ 3.5 %
Chloride content (CL-)	≤ 0.1 %

Who May be Interested

- Architects
- General contractors
- Precast companies
- Finishing and decoration contractors

Applications

- Non-structural concrete applications
- Plastering, rendering and pavement works
- Tile adhesives and grouting mortars
- Non-structural precast elements

Available in

- 50 kg Bag
- Big Bag

6) Clinker



Portland cement clinker is made by heating, in a kiln, a homogeneous mixture of raw materials to a sintering temperature, which is about 1450 °C for modern cement. The aluminum oxide and iron oxide are present as a flux and contribute little to the strength. For special cement, such as Low Heat (LH) and Sulfate Resistant (SR) types, it is necessary to limit the amount of tricalcium aluminate ($3\text{CaO}\cdot\text{Al}_2\text{O}_3$) formed.

The major raw material for the clinker-making is usually limestone (CaCO_3) mixed with a second material containing clay as a source of aluminosilicate. Normally, an impure limestone which contains clay or SiO_2 is used. The CaCO_3 content of these limestones can be as low as 80%. Second raw materials (materials in the raw mix other than limestone) depend on the purity of the limestone. Some of the second raw materials used are: clay, shale, sand, iron ore, bauxite, fly ash and slag. When a cement kiln is fired by coal, the ash produced from the coal acts as a secondary raw material.

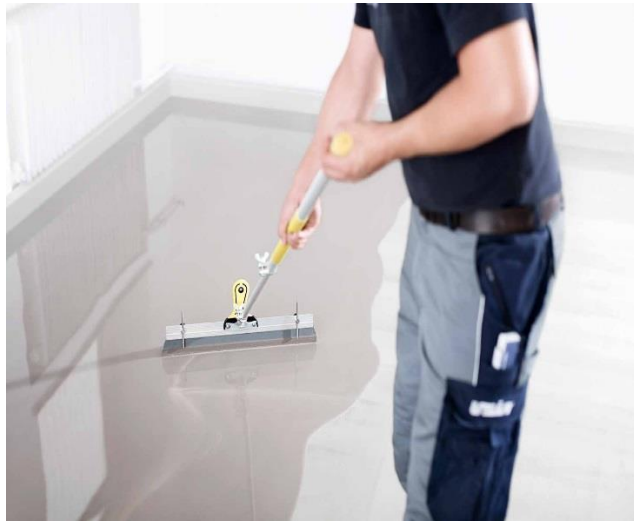
Available in

- Big Bag
- Bulk

GYPSUM PRODUCTS

The range of products that includes gypsum-based products for cornices molding, cement additives, marble fixing, floor protection and site-applied cornices. Traditional Plasters are manufactured from a variety of high-quality raw gypsum rocks with different grades of whiteness and strength according to the required function.

1) Multi-purpose fast setting gypsum binder



The traditional gypsum binder extracted from Barkan quarry used for multi-application - nonstructural civil works- such as floor covering, additives for sand & cement mortars, marble fixing, etc.

Characteristics

Gypsum Building Plaster (B1) with an initial setting time < 20 min and compressive strength $\geq 2,0$ N/mm²

GYPSUM BUILDING PLASTER

EN 13279-1 - B1/20/2

Standard ES: 188 & EN 13279

Compressive Strength	8 - 10 N/mm²
Flexural Strength	3 - 3.5 N/mm²
Surface Hardness	12 -14.5 N/mm²
Wet Density	1500 gm/l
PH Value	neutral
Workability Time	3 -7 minutes
Initial Setting time	10 -15 minutes
% Mixing water	80%
Whiteness	≥89

Applications

- Fast setting stucco
- Pre-mixed powder - only addition of water is required
- Economic
- floor covering as a protective layer
- Marble fixing
- Additives for sand & cement mortars to accelerate setting time
- High fineness
- Suitable setting time
- It gives high final compressive strength

Available in

- It is supplied in 30.3KG paper sacks constructed in two layers.
- The construction of the sacks ensures that the contents will be protected adequately under normal conditions of transport, storage, and handling. Within the claimed shelf life for 3 months, avoiding direct contact with water in proper storage conditions.
- Each sac should be marked with the date of filling or production.
- Packs / Ton: 33

2) Fast Setting Moulding Binder



It is high-quality gypsum extracted from Sinai rocks- with 94% whiteness used for cornices and decorative forms molding.

Characteristics:

Gypsum Building Plaster (B1) with an initial setting time < 20 min and compressive strength $\geq 2,0$ N/mm²

GYPSUM BUILDING PLASTER

EN 13279-1 - B1/20/2

Wet Density	1500 gm/l
PH Value	Neutral
Workability Time	3 -7 minutes
Initial Setting time	13 -20 minutes
% Mixing water	70 -90%
Whiteness	94 -97%

Applications

- **Medium setting mortar for big size cornices and forms molding**
- **Very High whiteness**
- **Extracted from high-quality Sinai rocks**
- **One component pre-mix -only water addition is required**
- **Molding**
- **Pre-cast cornices**
- **Gypsum forms**
- **Optimum for big size cornices and forms molding which needs medium setting times**

Available in

- **It is supplied in 30.3KG paper sacks constructed in two layers.**
- **The construction of the sacks ensures that the contents will be protected adequately under normal conditions of transport, storage, and handling. Within the claimed shelf life for 3 months, avoiding direct contact with water in proper storage conditions.**
- **Each sac should be marked with the date of filling or production.**
- **Packs / Ton: 33**

3) Medium setting Moulding Binder



It is high-quality gypsum extracted from Sinai rocks- with 97% whiteness used for cornices and decorative forms moulding.

Snap set: Completely set @ 22 mins (maximum)

Characteristics

Gypsum Building Plaster (B1) with an initial setting time <20 min and compressive strength $\geq 2,0 \text{ N/mm}^2$

GYPSUM BUILDING PLASTER

EN 13279-1 - B1/20/2

Wet Density	1500 gm/l
PH Value	Neutral
Workability Time	4 -8 minutes
Initial Setting time	15 -21 minutes
% Mixing water	75% -81% ml/100gm
Whiteness	> 94% by colour meter(Hunter system)
Fineness	2 - 6 % retained on 150 Um sieve (by weight)
Fluidity	150 - 200 mm.
Lumps	must be free of any lumps after normal hand mixing for 2 mins in lab
Flexural strength	4 - 5 N/mm ² (Depending on WGR)
Compressive strength	10 - 15 N/mm ² (Depending on WGR)

Hardness	70 - 80 Shore C (Depending on WGR)
Sodium Chloride	Traces
Crystal water	4 - 6 % by weight

Applications

- **Medium setting mortar for big size cornices and forms molding**
- **Very High whiteness**
- **Extracted from high-quality Sinai rocks**
- **One component pre-mix -only water addition is required**
- **Molding**
- **Pre-cast cornices**
- **Gypsum forms**
- **Optimum for big size cornices and forms molding which needs medium setting times**

Available in

- **It is supplied in 30.3KG paper sacks constructed in two layers.**
- **The construction of the sacks ensures that the contents will be protected adequately under normal conditions of transport, storage, and handling. Within the claimed shelf life for 3 months, avoiding direct contact with water in proper storage conditions.**
- **Each sac should be marked with the date of filling or production.**
- **Packs / Ton: 33**

4) High-Quality Molding Plaster



It is high-quality gypsum extracted from Sinai rocks- with 94% whiteness used for cornices and decorative forms molding.

Characteristics

Gypsum Building Plaster (B1) with an initial setting time <20 min and compressive strength $\geq 2,0 \text{ N/mm}^2$

GYPSUM BUILDING PLASTER

EN 13279-1 - B1/20/2

Fineness	2 - 6 % retained on 150 mm sieve (by weight)
Fluidity	150 - 200 mm.
Wet Density	1500 gm/l
PH Value	Neutral
Workability Time	8 -12 minutes (by standard knife)
Flexural strength	4 - 5 N/mm² (depending on WGR)
Compressive strength	10 - 15 N/mm² (depending on WGR)
Hardness	70 - 80 Shore C (depending on WGR)
Final Setting time	25 - 30. @ 40 shore A (by DUROMETER)
% Mixing water	70 -76 ml/100 gm.
Whiteness	> 94% by colour meter (Hunter system)
Lumps	Must be free of any lumps after normal hand mixing for 2 min. in the lap
Sodium chloride	Traces
Crystal water	4 - 6 % by weight

Applications

- Medium setting mortar for big size cornices and forms molding
- Very High whiteness
- Extracted from high-quality Sinai rocks
- One component pre-mix -only water addition is required
- Molding
- Pre-cast cornices
- Gypsum forms
- Optimum for big size cornices and forms molding which needs medium setting times

Available in

- It is supplied in 30.3KG paper sacks constructed in two layers.
- The construction of the sacks ensures that the contents will be protected adequately under normal conditions of transport, storage, and handling. Within the claimed shelf life for 3 months, avoiding direct contact with water in proper storage conditions.
- Each sac should be marked with the date of filling or production.
- Packs / Ton: 33

5) Molding Plaster



It is a molding plaster, most convenient for cornices molding at industrial scale with a high level of whiteness.

Characteristics

Gypsum Building Plaster (B1) with an initial setting time < 20 min and compressive strength $\geq 2,0$ N/mm²

GYPSUM BUILDING PLASTER

EN 13279-1 - B1/20/2

Wet Density	1500 gm/l
PH Value	Neutral
Workability Time	7 - 9 minutes
Initial Setting time	27 \pm 3 minutes
% Mixing water	73% \pm 3%
Whiteness	>94%

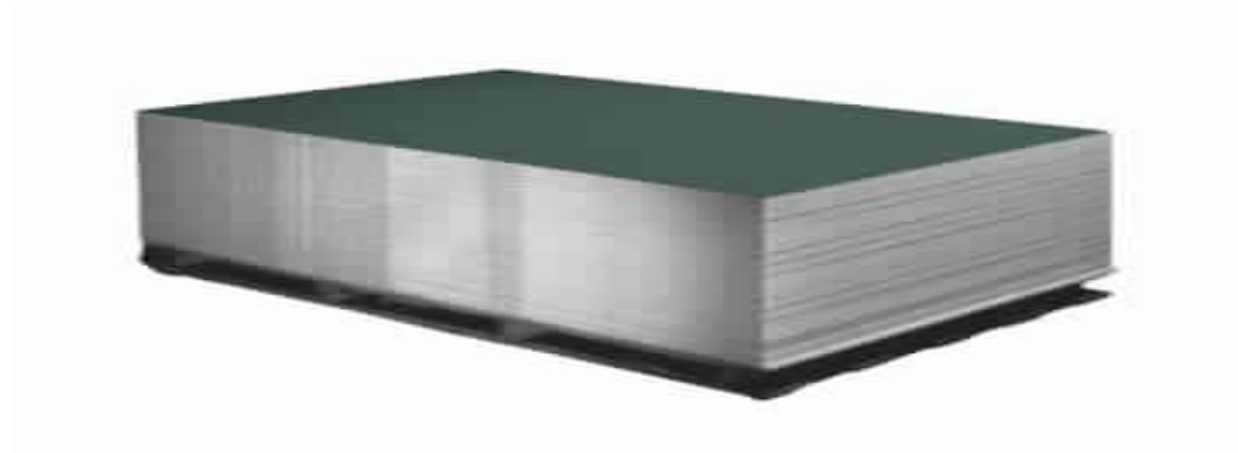
Applications

- Long working and setting time
- Suitable for industrial production of gypsum cornices and decorative items
- Whiteness above 94%

Available in

- It is supplied in 30.3KG paper sacks constructed in two layers.
- The construction of the sacks ensures that the contents will be protected adequately under normal conditions of transport, storage, and handling. Within the claimed shelf life for 3 months, avoiding direct contact with water in proper storage conditions.
- Each sac should be marked with the date of filling or production.
- Packs / Ton: 33

6) Moisture Resistant Gypsum Board



Moisture Resistant Gypsum Boards are high-performance gypsum boards used as the cladding component of drywall constructions in humid areas

Applications

- Partition or Ceilings of Kitchens/Bathrooms
- Wall Lining/Furrings in Kitchens/Bathrooms
- Partitions with tiled finish requirements
- Any internal area which is exposed to humidity

Characteristics

Board Dimensions:

- Thickness: 12.5 / 9.5 / 15 mm
- Width: 1200 mm
- Length: 2400 or 3000 mm*

Board Weights:

- 12.5mm approx. 10 kg/ m²
- 15mm approx. 12.2 kg/ m²

Edge Detail:

- Taper Edge (TE)

Appearance:

- Green Paper Liner

7) Fire Resistant Gypsum Board



Fire Resistant Gypsum Boards are high-performance gypsum boards used as the cladding component of drywall constructions

Applications

- Fire rated partitions using metal frames
- Fire rated suspended ceilings using metal frames
- Fire rated furring and wall linings
- Fire rated shaft walls

Characteristics

Board Dimensions:

- Thickness: 12.5 / 9.5 / 15 mm
- Width: 1200 mm
- Length: 2400 or 3000 mm*

Board Weights:

- 12.5mm approx. 10kg/ m²
- 15mm approx. 13 kg/ m²

Edge Detail:

- Taper Edge (TE)

Board Type:

- EN520 – Type DF

8) Regular Gypsum Board



Regular Gypsum Boards are essential for standard lightweight drywall constructions

Applications

- Drywall partitions using metal frames
- Suspended ceilings using metal frames
- Furring and wall linings
- Prefabricated building units

Characteristics

Board Dimensions:

- Thickness: 6.5 / 9.5 / 12.5 / 15 mm
- Width: 1200 mm
- Length: 2400 or 3000 mm*

Board Weights:

- 12.5mm approx. 9.4kg/ m²
- 15mm approx. 11.8 kg/ m²

Edge Detail:

- Taper Edge (TE)

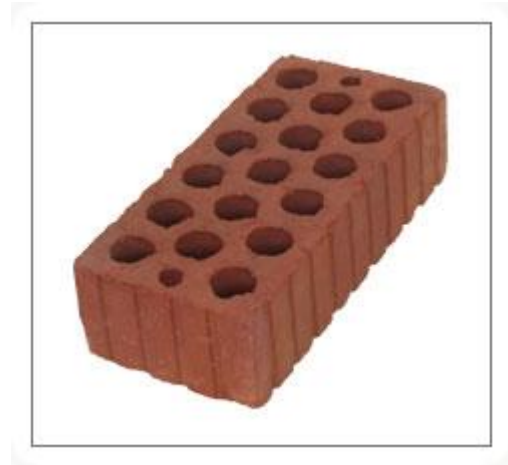
Appearance:

- Ivory / Grey Paper Liner

RED BRICKS & CLAY PRODUCTS

Egyptian producers of Clay bricks & Roofing tiles are following the European specifications. High quality, dependable transportation in addition to a worth trusty customer service.

1) Egyptian Clay Bricks 25 x 12 x 6.5



Privileges

- Weighs less
- Insulating
- Used in Buildings with domes
- 1000 Egyptian Bricks = 1300 normal Bricks

No. of bricks in one m ²	Stress	Water Absorption	Density	Weight	Dimensions
103 Brick	100:120	10.4 %	980 kg/m ³	2.1 kg	25 x 12 x 6.5

2) Double Clay Bricks 25 x 12 x 13



Privileges

- Weighs less
- Insulation
- Saves cement
- Saves time
- Faster building process

No. of bricks in one m ²	Stress	Water Absorption	Density	Weight	Dimensions
55 Brick	70:80	9.8 %	1117 kg/m ³	4.16 kg	25 x 12 x 13

3) European Clay Bricks 25 x 12 x 15



Privileges

- Good soundproof
- Good heat & humidity insulator
- Hollow 70% which means that it weighs less
- Earthquake resistant
- Saves e10/1/2006nergy
- Saves 50% of the average building materials used
- Faster building Process

No. of bricks in one m2	Stress	Water Absorption	Density	Weight	Dimensions
48 Brick	25:30	8.74 %	986 kg/m3	4.6 kg	25 x 12 x 15

4) European Clay Bricks 33 x 12 x 15



Privileges

- Perfect heat & sound insulator
- First 25cm brick
- Saves 70% of average Building Materials used
- Zero waste
- Saves four times the times needed for building
- 1000 Eu block = 8000 Brick
- Soundproof 14 decibel

No. of bricks in one m2	Stress	Water Absorption	Density	Weight	Dimensions
18 Brick	20:25	13%	936 kg/m3	11 kg	33 x 25 x 15

5) European Clay Bricks 200 20x26x12



Privileges

- Dimensions In CM 20x26x12
- Superior Sound Proof properties
- Superior Heat Insulation
- Lightweight construction by, decrease 40 % in the total stress of the building
- Increased Earthquake Resistant construction
- Saves Electricity in air conditioning
- Faster building process 2 times the speed of the normal small bricks
- Saves Average 50% from materials
- Fire Resistant

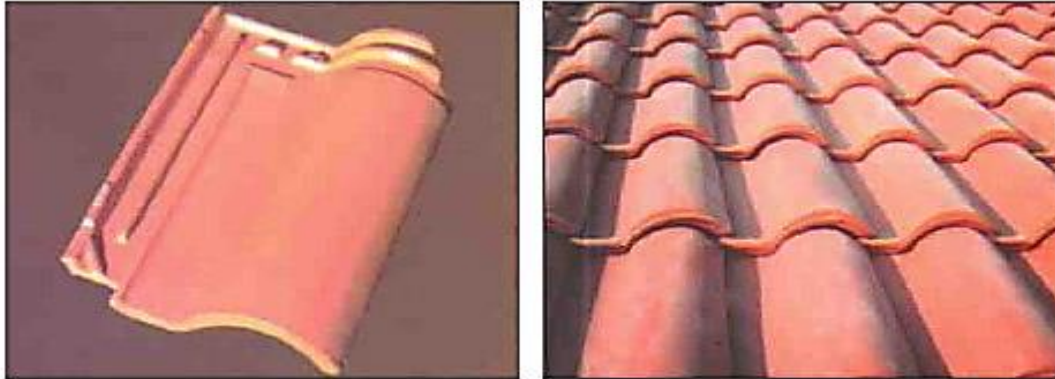
6) European Clay Bricks 250 26x25x12



Privileges

- Dimensions In CM 26x25x12
- Superior Sound Proof properties
- Superior Heat Insulation
- Lightweight construction by, decrease 40 % in the total stress of the building
- Increased Earthquake Resistant construction
- Saves Electricity in air conditioning
- Faster building process (4 times the speed `of the normal small bricks)
- Saves more than 50% from materials on wall construction
- Fire Resistant
- There is a half size for ease of wall completion

7) Roman Roofing Tiles



Type	Size	Pieces	Pieces on the Pallet
Roman	28 x 42	13/m ²	240

8) Ridge Roofing Tiles



Type	Size	Pieces	Pieces on the Pallet
Ridge	3 Pieces / m	10 kg/m ²	120

9) Fantazia Roofing Tiles



Type	Size	Pieces	Pieces on the Pallet
Fantazia	28 x 42	13/m ²	240

AGGREGATE & SAND

1) Aggregates



Aggregates are the most utilized product in the world. They can be used in their natural state or can be crushed into smaller pieces. Our aggregates product line offers a full range of crushed rock, stone, sand, and gravel for the civil, commercial, residential, and industrial construction sectors.

2) Construction Sand



Construction Sand is using for building or plastering. Good quality of Construction Sand means, Low Cement Consumption High Concrete Stress and High Cheering and Pressure Force Resistant. The composition of sand is highly variable, depending on the local quarries sources and conditions. (Silicon dioxide or SiO_2). High and Huge Reserve is available in Egypt can match long-term contracts.

Properties

- Construction sand is rounded, bright yellow and sometimes off-white.
- Construction Sand is available either in the river or in old ancient Quarries for thousands of years.
- Construction Sand is available in loose grains.
- Processing is easily by normal machines without using and Explosion materials or any Crushing machines.
- Construction Sand is totally free of any Organic Materials or any radiation or big blocks or concrete stones.
- Moisture of Construction Sand does not Exceed 1%. %-3%.
- The practical size of yellow Construction sand is 100 below 2mm and below 0.075mm is nothing.

Applications

- Plastering backfilling
- Building Blocks
- Using under tiles
- Road Paving
- Mortar
- Blinding Concrete
- Reinforced Ready-mix concrete
- Filling under Foundations
- Fabricating masonry blocks

Available in

- Min 25000 tons of Construction Sand can be exported.
- Normally local by Cubic Meter but for Exporting Normally in Tons
- One Cubic meter =1500kg-1550Kg
- Construction Sand can be backed in Jumbo bags(Big Bags of 1500kg) or Bulk without bags
- Construction Sand can be Stored in Open Yard

3) Foundry (Molding) Sand



High Quality and high deposit foundry sand since thousands of years with Huge Reserve in Egypt with the quality of 99.10% SiO_2 with and Iron content average from 0.018% -0.0.35% with practical size Distribution from 0.075mm-0.85mm, its High Quality with high whiteness and Low Al_2O_3 support high casting products which used for multicasting uses. Because we are in Egypt land of large several minerals, we have Brown Silica sand with Purity of 96.5%-97% SiO_2 and the. High-Frequency Vibrating Screen supports us to produce different fines.

Properties

- High Strength and High RESISTANCE meets ASTM
- ISO 9001 Certified
- High strength, superior casting finishes in all binder systems and metals

Applications

- Ferrous and Nonferrous metal casting industry
- Preparing the mold cavity
- Car factories

Available in

- Stored and exported in Bulk shipment
- Vessel of 5000-25000 M tons Max can enter the port draft
- For orders of 1000 tons or less can be packed in big bags of 1250kg-1500kg
- Containers of 20 feet can be stuffed with 25-27 tons

CONCRETE BLOCKS

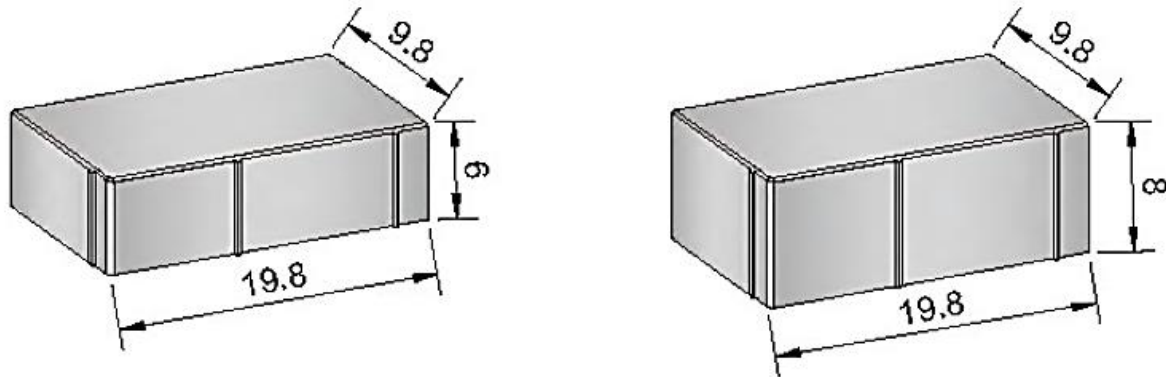


South Falcon® supplies precast interlocking pavers, concrete curbs, techno tiles, solid and hollow concrete blocks, reinforced concrete manholes, inspection chambers, traffic barriers and concrete furniture.

We can produce any other elements with different thicknesses (from 40mm up to 400mm).



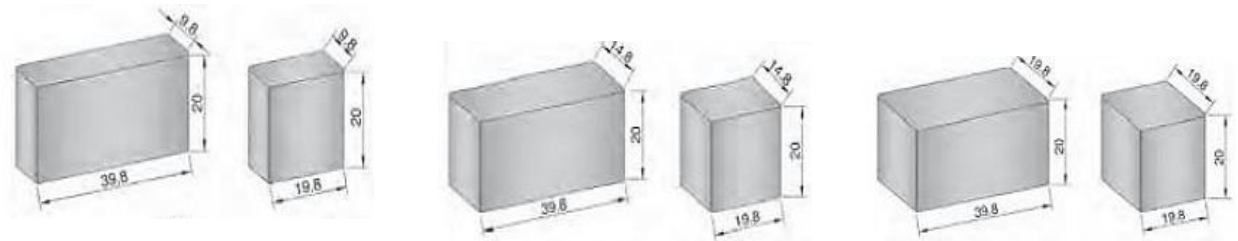
1) Building Stone



Due to its appropriate size, strength, and hardness, because fusing dolomite materials and applying high pressure in the manufacturing process and the cement content, it is used to build load-bearing walls and non-load bearing in buildings, factories, and fences and it is easy to form any outdoor decoration, it's economical with high qualities. It is available with half-cut, which reduces waste and gives a complete flexibility in construction. The waste percentage is zero which gives it an advantage over the other types of clay and concrete bricks. Available thicknesses are 6 cm and 8 cm.

Sizes(cm)	10 x 20 x 8	10 x 20 x 6
blocks / layer	59+(2x1 l2)	59+(2x1 /2)
Weight (kg)	3.25	2.25
blocks / Bundle (10 layer)	600	600
Weight (kg) / Bundle(10 layer)	1950.0	1350.0

2) Solid block

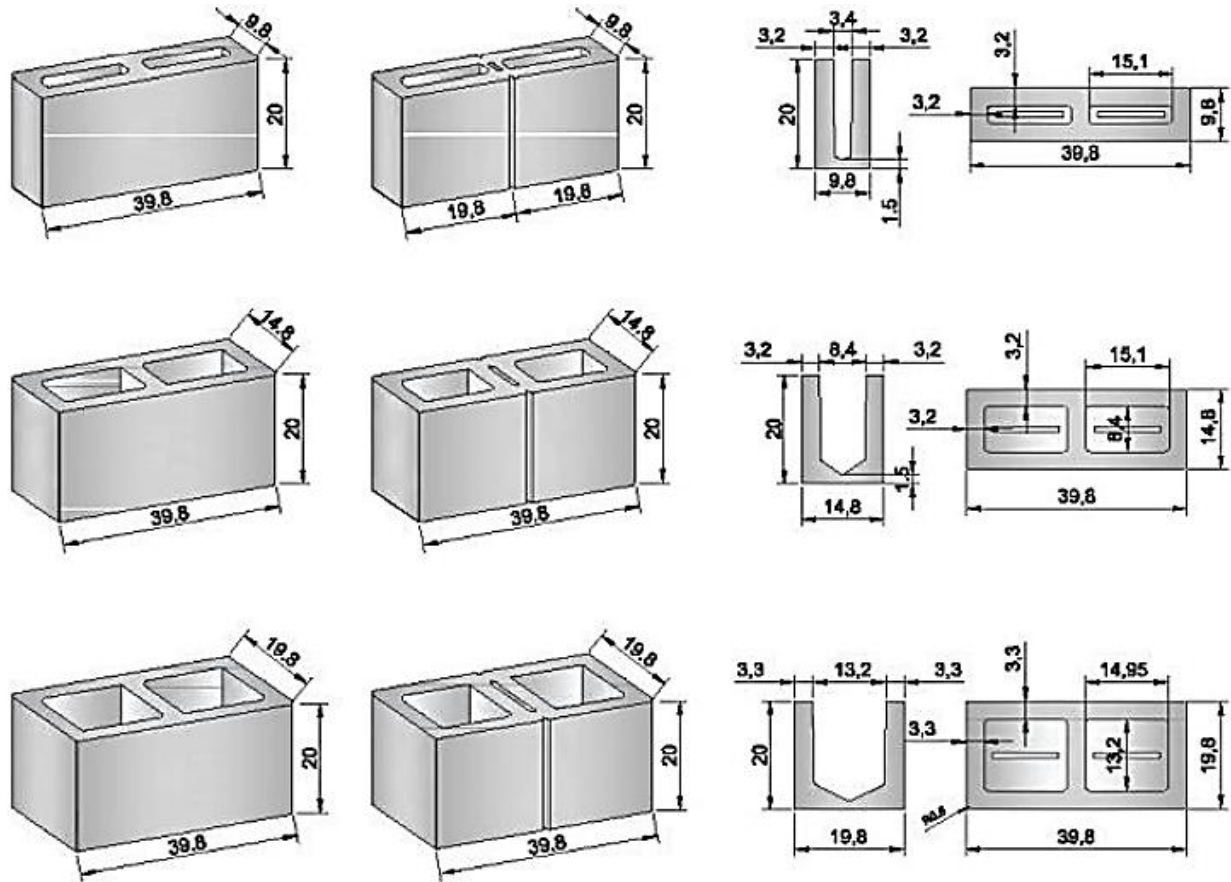


Due to its appropriate size, strength, and hardness, because fusing dolomite materials and applying high pressure in the manufacturing process and the cement content, it is used to build load-bearing walls and non-load bearing in buildings, factories, and fences and it is easy to form any outdoor decoration, it's economical with high qualities. It is available with half-cut, which reduces waste and gives a complete flexibility in construction. The waste percentage is zero which gives it an advantage over the other types of clay and concrete bricks. Available thicknesses are 6 cm and 8 cm.

Sizes(cm)	S 20	S 15	S 10
Block / layer	17+(2x1/2)	23+(2x1/2)	32+(2x1/2)
Weight (kg)	32.50	24.75	16.50
Blocks / Bundle(5 layer)	90	120	165
Weight (kg) / Bundle(3 layer)	2925.0	2970.0	2722.5
Type of Surface	Fine & rough	Fine & rough	Fine & rough
Colors	Yes	Yes	Yes



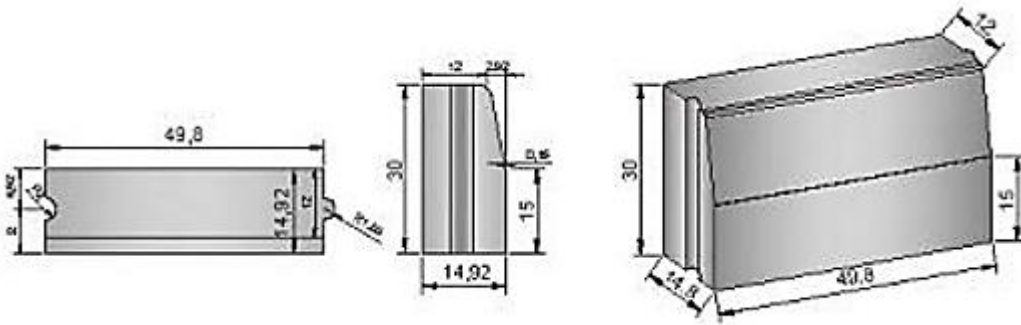
3) Hollow block



It is low cost and lightweight and it is possible also to produce economical colored hollow Block with a smooth surface without the need for any external finishing. Because of the availability of the colored smooth hollow blocks. there is no need for paint and their related problems! Available thicknesses are 10, 15 and 20 cm type (H10 & H15 & H20). The half-blocks are necessary for this type of blocks to reduce waste and increase the speed of work.

Sizes(cm)	H 20	H 15	H 10
Block / layer	16+(4x1/2)	22+(4x1/2)	27+(6x1/2)
Weight (kg)	19.0	15.0	13.0
Blocks / Bundle(5 layer)	90	120	150
Weight (kg) / Bundle(3 layer)	1710	1800	1950
Type of Surface	Fine & rough	Fine & rough	Fine & rough
Colors	Yes	Yes	Yes

3) Kerbstone

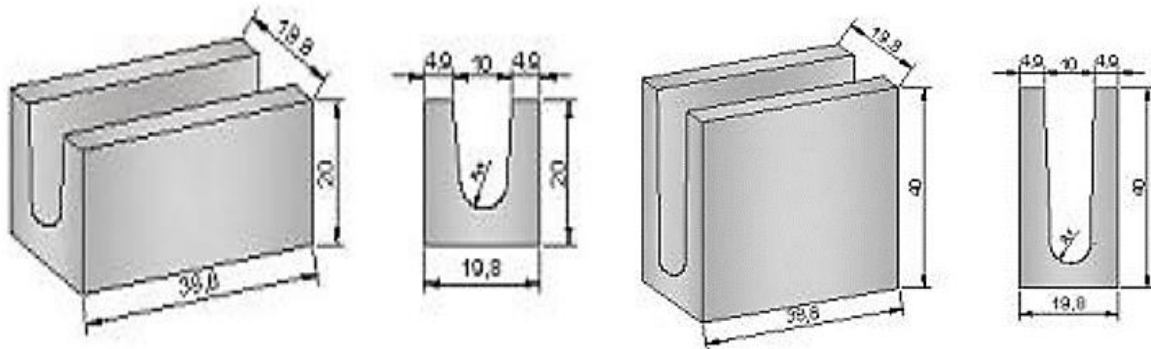


Kerbstone has high resistance strength. Accuracy in dimensions and also easy installation. The presence of entangling among pieces increases the consistency and gives greater resistance to bearing impacts. Normal (concrete) interlock can be produced as well as the colored surface Interlock (upper and front) in all colors to achieve integration with interlock pavers. Curved Kerbstone will be produced soon to fulfill the needs of curves. Circles and trees plantation.

Sizes(cm)	12/15 x 30 x 50
Length (cm)	50
Weight (kg)	45.0
Length (m.l) / Layer	6
Length (kg) / Bundle(3 layer)	18
Weight (kg) / Bundle(3 layer)	1620.0
Type of Surface	Interlock
Colors	Yes

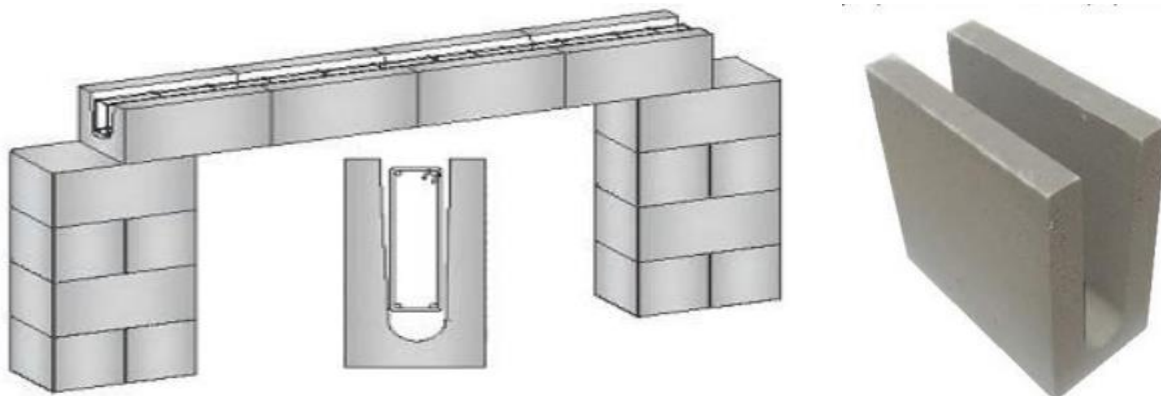


4) U Block



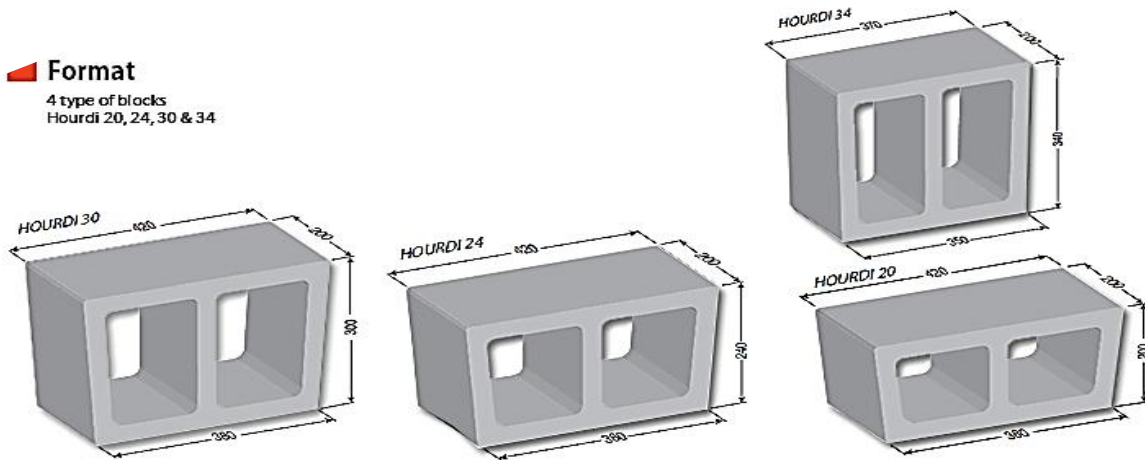
Most often, we need to make openings in block walls (like door openings and windows, etc...) for this, Intel beams must be installed on the openings for continuing the construction properly and safely without distortion to the general view. The U block with width 20 cm gives you an opportunity to complete construction over these openings without any problems with the possibility of reinforcing these beams and cast them with concrete to maintain the resistance strength and their structural function for small openings (less than 150 cm), please use (20X20X40) for big openings up to 250 cm please use (40X20X40)

Sizes(cm)	U 40	U 20
Length (cm)	12	20
Weight (kg)	41.50	21.75
Blocks / Bundle(3 layer)	36	60
Weight (kg) / Bundle(3 layer)	1494.0	1305.0
Type of Surface	Fine & rough	Fine & rough
Colors	Yes	Yes



5) Hourdi block

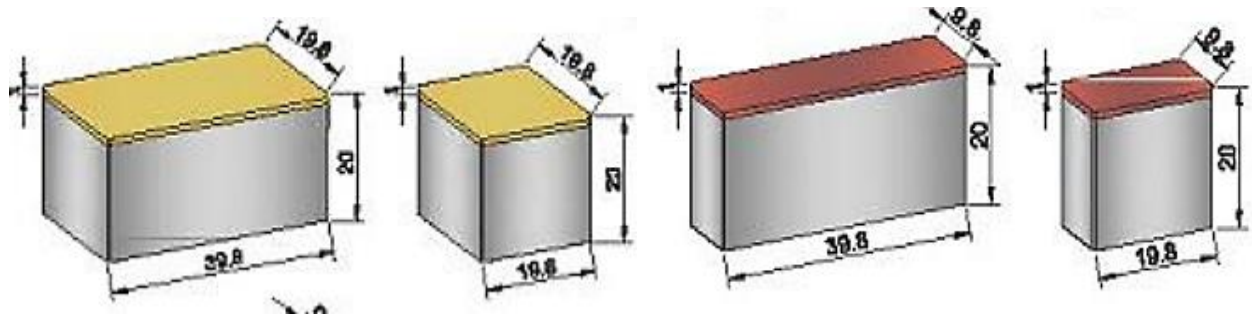
Format
4 type of blocks
Hourdi 20, 24, 30 & 34



Hourdi block, size (38/42 x 20 x 40) is one of the most popular sizes for this type, they are high resistance, durable and accurate in terms of dimensions. It is also available with enclosed side to prevent leakage of concrete inside the block at the edges.

Sizes(cm)	(38/42 x 20 x 40)
Length (cm)	18
Weight (kg)	19.65
Blocks / Bundle(5 layer)	90
Weight (kg) / Bundle(3 layer)	1768.5
Type of Surface	rough
Colors	No

6) U Block

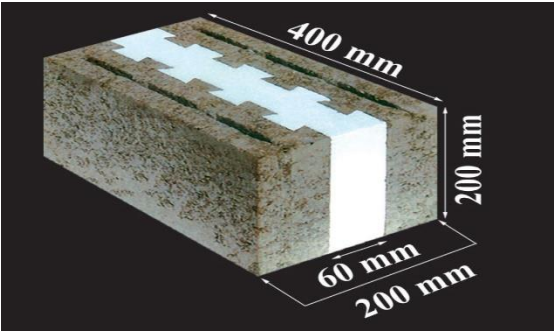


The U block has a thickness of 20 cm and a colored and smooth side surface. This type of block gives you a chance for wonderful formations in the outer walls of the halls. Factories, fences, and even buildings, private apartments, and villas. Its prices are affordable and it does not need finishing works nor paint, weather problems are not on the issue anymore as the interlock layer is about 10 mm. The availability of two heights (20 cm and 10 cm) and also the half-cut blocks give wonderful formations and designs.

Sizes(cm)	20 x 40 x 20	U 20
Block / layer	17+(2x1/2)	32+(2x1/2)
Weight (kg)	33.0	16.50
Blocks / Bundle(5 layer)	90	165
Weight (kg) / Bundle(3 layer)	2970.0	2722.0



7) Insulating block



The insulated block measurements are (20 x 20 x 40) cm, which is made of two layers of blocks with an insulator of material polystyrene between is the most common worldwide because of its simplicity in installation and saving the dimensions. The production of this product is comparable to (EU) products and has the same specifications of German code for these characteristics:

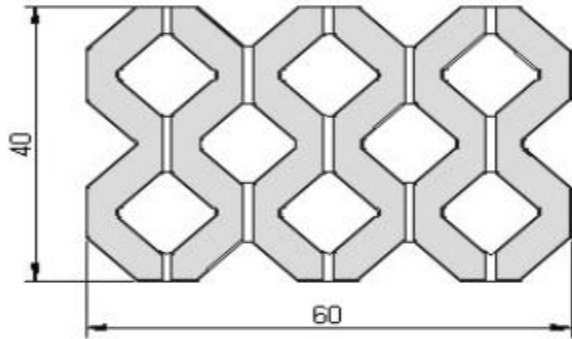
- Expanded polystyrene ,density =22 — 24 kg/m³
- Heat flow density q = 10.6 w/m²
- Heat storage factor Q = 54.5 kcal/m² C
- U — value u = 0.41 85 w/m² C
- Cooling time h = Q x1/u = 54.5 x1/ 0.41 85:1302 hours 7 block / layer 11+(2x1 /2) Ml g 3.4.1.”

Sizes(cm)	(38/42 x 20 x 40
Block / layer	11+(2x1/2)
Weight (kg)	21.75
Blocks / Bundle(5 layer)	60
Weight (kg) / Bundle(3 layer)	1305.0
Type of Surface	Fine & rough
Colors	Yes

There are many reasons make you choose the insulated block in the construction of external walls, especially:

- 1) The very high Coefficient of thermal insulation
- 2) Excellent sound insulation.
- 3) Lightweight.
- 4) Excellent thermal storage (to maintain the temperature of the ambiance in summer and winter).
- 5) Accurate dimensions and standards and easiness in installation and work

8) Kerbstone

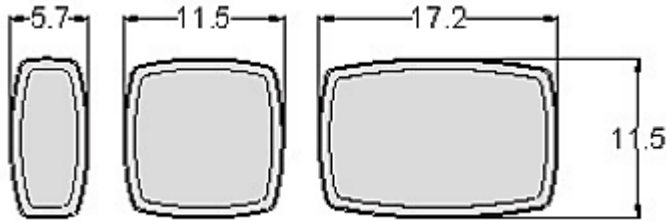


These pavers are easy to install with high economical factor and a feasible price. It is used for green yards parking lots and covering the sides of bridges and cliffs. When there is a big area in size. It is useful to pave using this type as it is economical and very beautiful with the possibility of installing other types next to it to give a combination of economy and beauty. Available thickness is 8 cm allowing planting of turf within cells.

Sizes(cm)	40 x 60
Thickness Of Stone(Cm)	8
Area Per Stone(Cm²)	2400
Weight Per Stone(Kg)	25.23
Numbers / Layer	6
Area (M2) / Layer	1.44
Weight (Kg) / Layer	151.35
Area (N12) / Bundle(10 Layer)	14.40
Weight (Kg) / Bundle(10 Layer)	1513.5

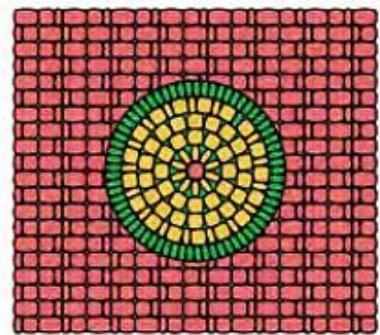
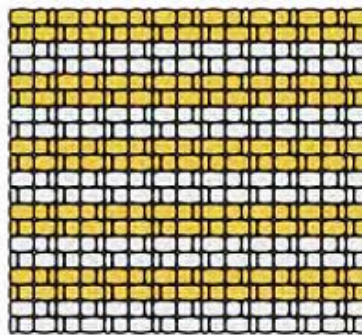
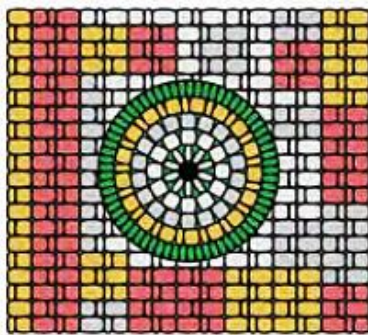


9) Rusto Paver

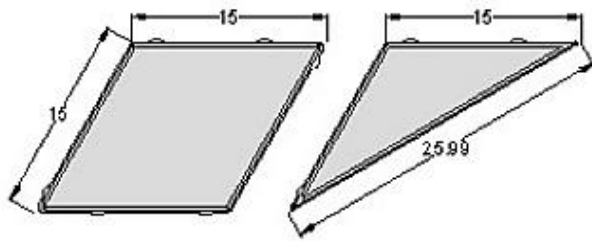


The possibility of forming curves and circles is big because of its three sizes (small, medium and big). Very suitable for gardens parks and for those who want to go back to the beautiful time! It can be mixed with the (Classico) type for bigger possibilities for forming circles and curves. Available thickness is 6 cm with a chamfer at the perimeter.

Sizes(cm)	Big 17.2 x 11.5	Medium 11.2 x 11.5	Small 5.7 x 11.5
Thickness Of Stone(Cm)	6	6	6
Area Per Stone(Cm ²)	197.79	132.24	65.5
Weight Per Stone(Kg)	2.50	1.65	0.75
Numbers / Layer	24	24	24
Area (M2) / Layer	0.95	0.95	0.95
Weight (Kg) / Layer	117.60	117.60	117.60
Area (M2) / Bundle(10 Layer)	9.50	9.50	9.50
Weight (Kg) / Bundle(10 Layer)	1176.0	1176.0	1176.0

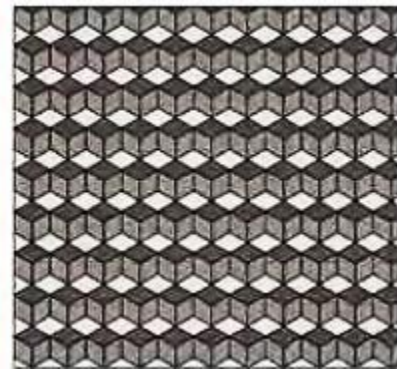
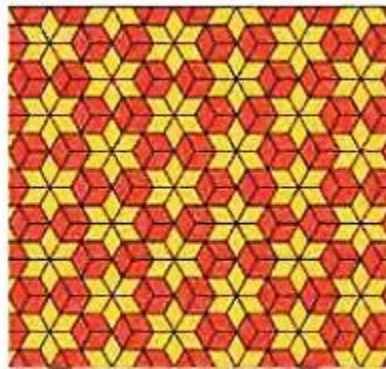
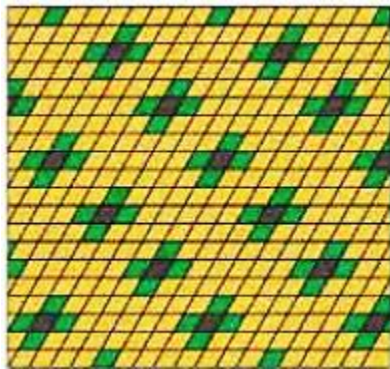


10) Rumba Paver

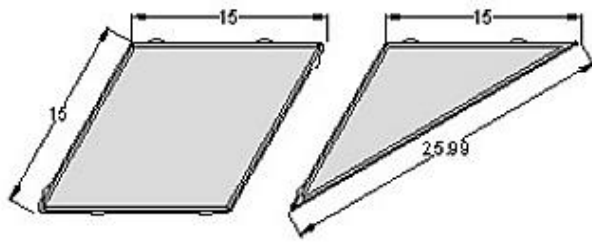


It generates beautiful pavement shape which gives an impression that it is three-dimensional. It is easy to install and suitable for large assembly courtyards in schools, universities or malls... especially when using colors. It is available with a thickness of 6 cm and it comes with spacers and chamfers at the perimeter the matter which gives greater strength and consistency.

Sizes(cm)	15 x 15
Thickness Of Stone(Cm)	6
Area Per Stone(Cm²)	194.85
Weight Per Stone(Kg)	2.50
Numbers / Layer	56 + (6 x 1/2)
Area (M2) / Layer	1.15
Weight (Kg) / Layer	147.50
Area (M2) / Bundle(10 Layer)	11.50
Weight (Kg) / Bundle(10 Layer)	1475.0



11) Rumba Paver

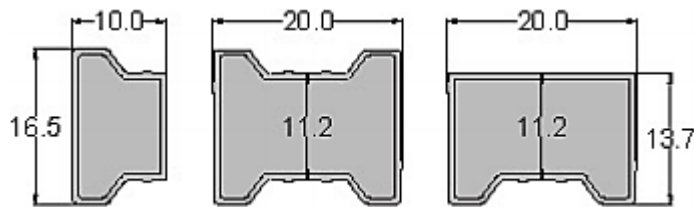


The presence of three sizes for the paver gives a big choice for the designer to form curves, circles, and arcs. As its name indicates. It takes us back to ancient times. This form is used in decorative works of art and it can take advantage of the spaces formed among the pavers for planting turf which gives wonderful forms. It is available in thickness of 6 cm and chamfer at the perimeter of the paver.

Sizes(cm)	Big 21 x 12	Medium 15 x 12	Small 9 x 12
Thickness Of Stone(Cm)	6	6	6
Area Per Stone(Cm ²)	252	180	108
Weight Per Stone(Kg)	3.20	2.25	1.20
Numbers / Layer	16	24	24
Area (M2) / Layer	1.09	1.09	1.09
Weight (Kg) / Layer	134.00	134.00	134.00
Area (M2) / Bundle(10 Layer)	10.94	10.94	10.94
Weight (Kg) / Bundle(10 Layer)	1340.0	1340.0	1340.0

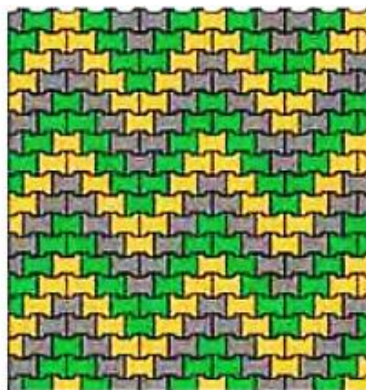
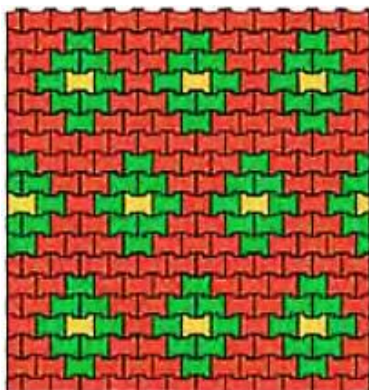


12) Behaton Paver

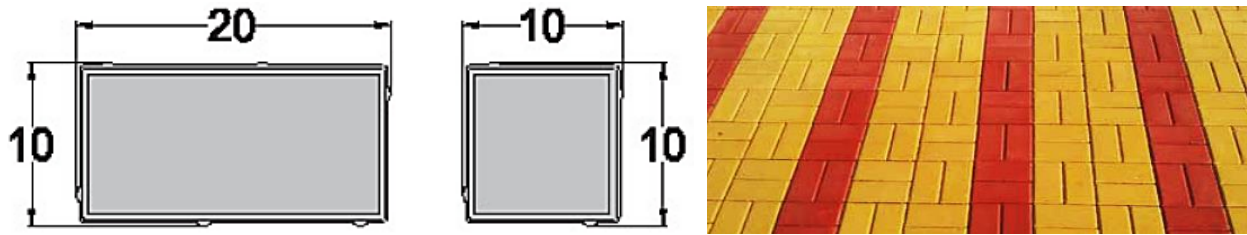


This form is considered the most common and important one. It has strong consistency because of the entangling between the pavers so it is suitable for roads, squares, warehouses, ports, and airports especially when using the mechanical paving. In addition to that, the availability of the spacers and the chamfered perimeter increases the friction force and the consistency between the tiles and gives a better steadiness forth tiles. This type is available with a thickness of 6 cm for normal loads and a thickness of 8 cm for heavy loads. A variety of beautiful designs can be achieved in paving especially when using colors.

Sizes(cm)	20 x 16.5	
Thickness Of Stone(Cm)	8	6
Area Per Stone(Cm ²)	280.0	280.0
Weight Per Stone(Kg)	4.90	3.65
Numbers / Layer	35 + (2 x 1/2)	35 + (2 x 1/2)
Area (M2) / Layer	1.01	1.01
Weight (Kg) / Layer	176.40	131.40
Area (M2) / Bundle(10 Layer)	10.08	10.08
Weight (Kg) / Bundle(10 Layer)	1764.0	1314.0

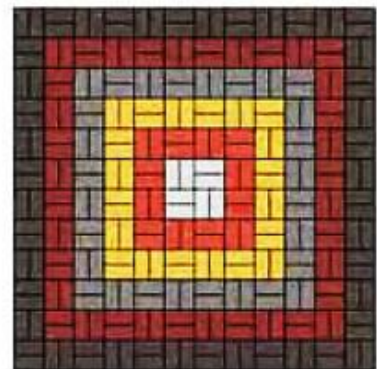
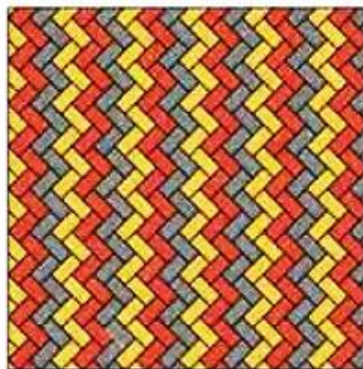
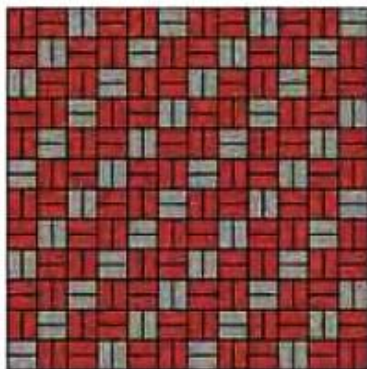


13) Rectangular Paver

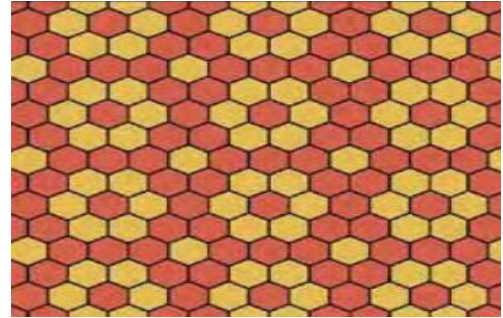
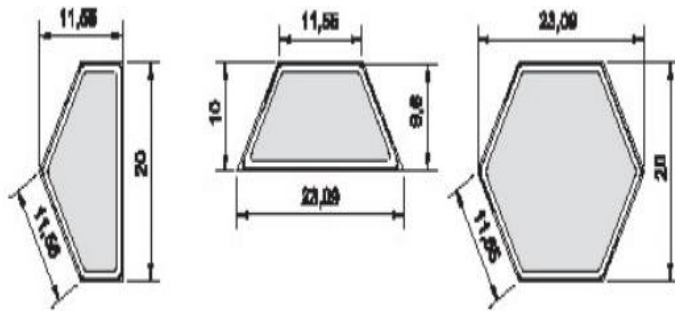


The rectangular pavers have a fast paving process and many beautiful patterns. They are used in all locations and are available with a thickness of 6 cm for normal loads and of 8 cm for heavy loads. The tiles come with spacers and chamfered outline to provide greater strength and consistency.

Sizes(cm)	20 x 10	
Thickness Of Stone(Cm)	8	6
Area Per Stone(Cm ²)	200	200
Weight Per Stone(Kg)	3.55	2.60
Numbers / Layer	59 + (2 x 1/2)	59 + (2 x 1/2)
Area (M2) / Layer	1.20	1.20
Weight (Kg) / Layer	213.00	156.00
Area (M2) / Bundle(10 Layer)	12.00	12.00
Weight (Kg) / Bundle(10 Layer)	2130.0	1560.0

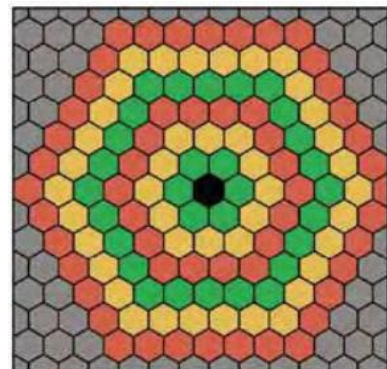
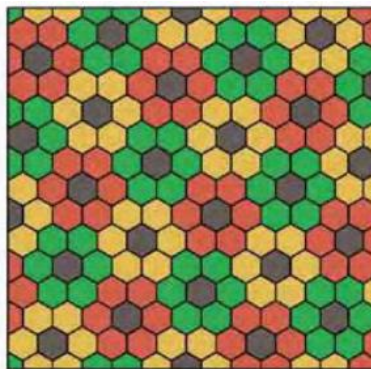
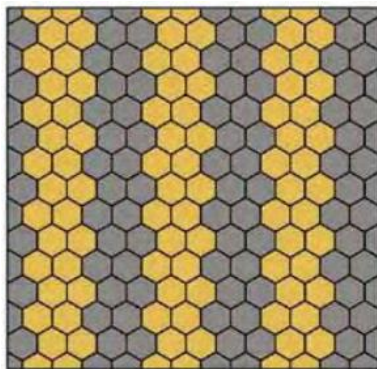


14) Hexagonal Paver

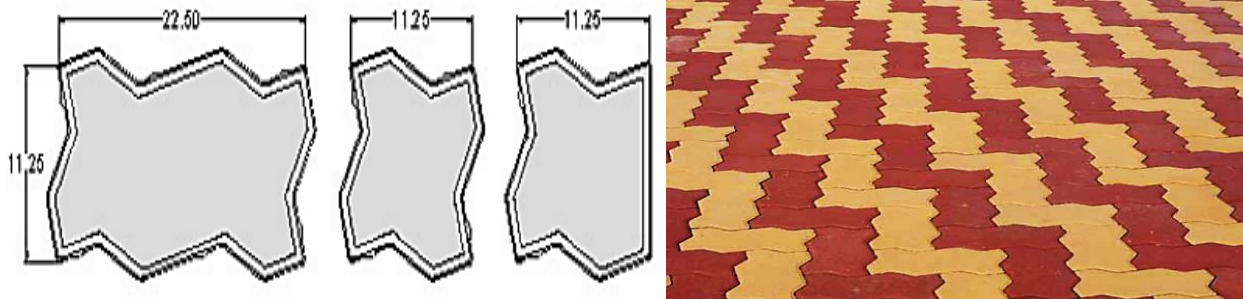


It's considered from the important and very common patterns. Its simple shape makes it easy to install and it can produce wonderful formations especially with the good choice of colors. It has high consistency due to the great entangling among pavers. It's available with a thickness of 6cm and 8cm with chamfer as well and wonderful halves.

Sizes(cm)	23.09 x 20	
Thickness Of Stone(Cm)	8	6
Area Per Stone(Cm ²)	346.29	346.29
Weight Per Stone(Kg)	6.10	4.60
Numbers / Layer	29 + (4 x 1/2)	29 + (4 x 1/2)
Area (M2) / Layer	1.07	1.07
Weight (Kg) / Layer	189.10	142.60
Area (M2) / Bundle(10 Layer)	10.73	10.73
Weight (Kg) / Bundle(10 Layer)	1891.0	1426.0

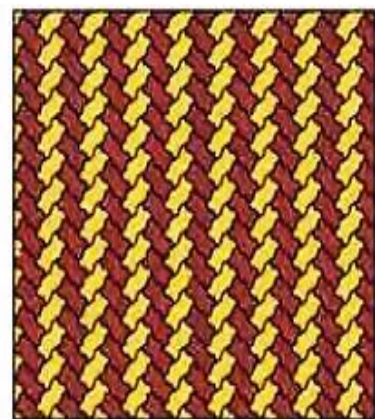
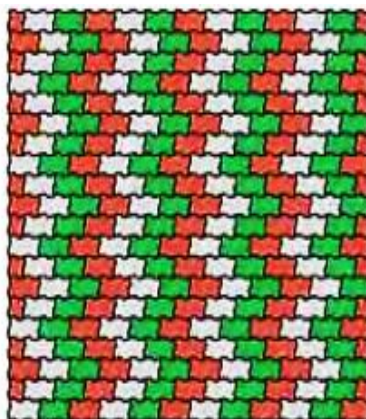
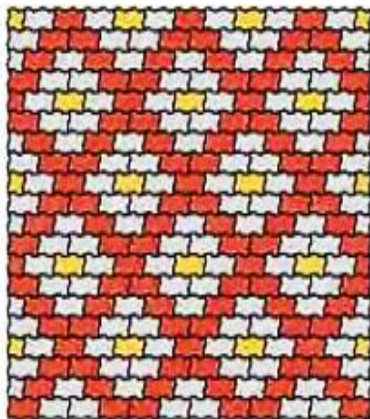


14) Uni Paver



Uni paver has a large scale of entangling which ensures stronger pavement. This is considered a classical and common pattern in the world. It is used very often in the squares, gas stations and roads. It can be paved with several beautiful patterns and its available thickness is 6cm with chamfer and spacers at the perimeter of the paver to ensure a big increase in consistency.

Sizes(cm)	23.09 x 20
Thickness Of Stone(Cm)	6
Area Per Stone(Cm²)	253.13
Weight Per Stone(Kg)	3.5
Numbers / Layer	39 + (2 x 1/2)
Area (M2) / Layer	1.01
Weight (Kg) / Layer	140.00
Area (M2) / Bundle(10 Layer)	10.13
Weight (Kg) / Bundle(10 Layer)	1400.0

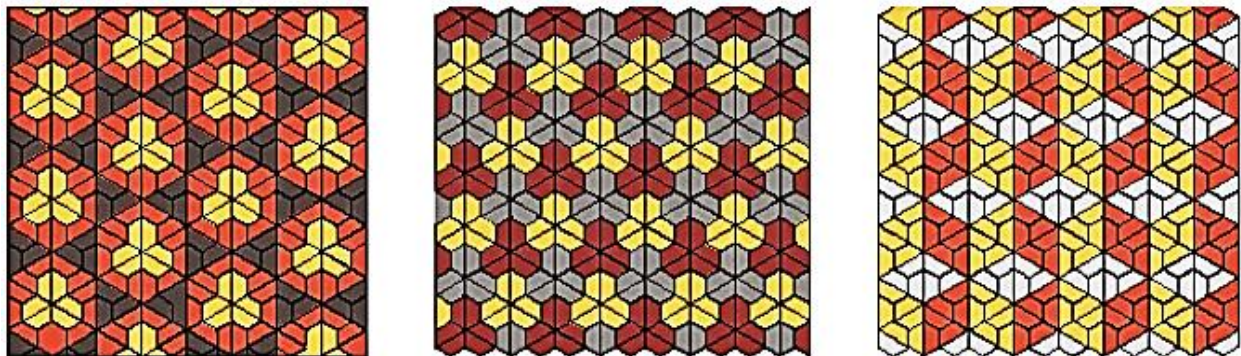


15) Decor Paver

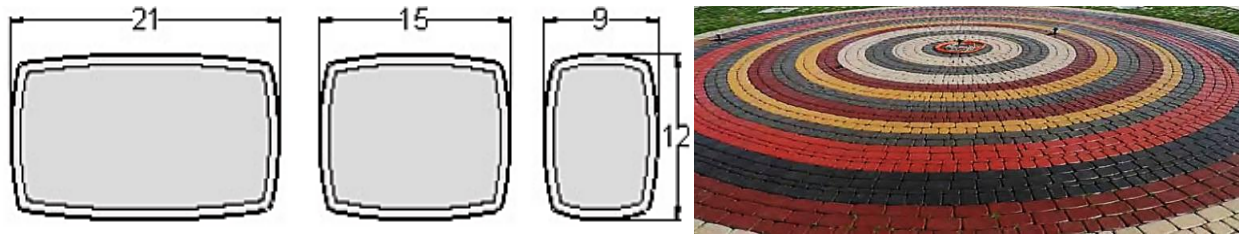


It is clear from its name that this type has a great ability to give great art forms which are very suitable for large spaces, parks gardens and for people who have a nice taste. It is available with a thickness of 6cm with spacers and chamfers at the perimeter of the paver.

Sizes(cm)	23.09 x 20
Thickness Of Stone(Cm)	6
Area Per Stone(Cm²)	213.8
Weight Per Stone(Kg)	2.70
Numbers / Layer	48
Area (M2) / Layer	1.03
Weight (Kg) / Layer	129.60
Area (M2) / Bundle(10 Layer)	10.26
Weight (Kg) / Bundle(10 Layer)	1296.0



16) Classico Paver



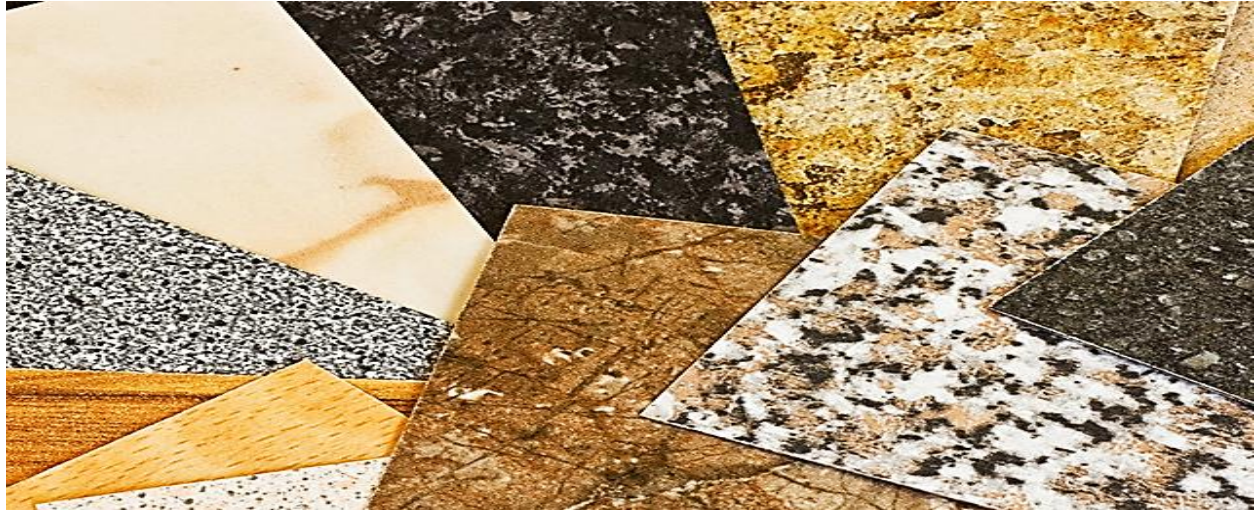
The presence of three sizes for the paver gives a big choice for the designer to form curves, circles, and arcs. As its name indicates, it takes us back to ancient times. This form is used in decorative works of art and it can take advantage of the spaces formed among the pavers for planting turf which gives wonderful forms. It is available in thickness of 6 cm and chamfer at the perimeter of the paver.

Sizes(cm)	Big 21 x 12	Medium 15 x 12	Small 9 x 12
Thickness Of Stone(Cm)	6	6	6
Area Per Stone(Cm ²)	252	180	108
Weight Per Stone(Kg)	3.20	2.25	1.20
Numbers / Layer	16	24	24
Area (M2) / Layer	1.09	1.09	1.09
Weight (Kg) / Layer	134.00	134.00	134.00
Area (M2) / Bundle(10 Layer)	10.94	10.94	10.94
Weight (Kg) / Bundle(10 Layer)	1340.0	1340.0	1340.0



NATURAL STONES

South Falcon® offers a wide selection of the highest quality granite, marble, limestone, and sandstone. We supply, cut and finish to almost any size or shape all natural stones using the latest machinery.



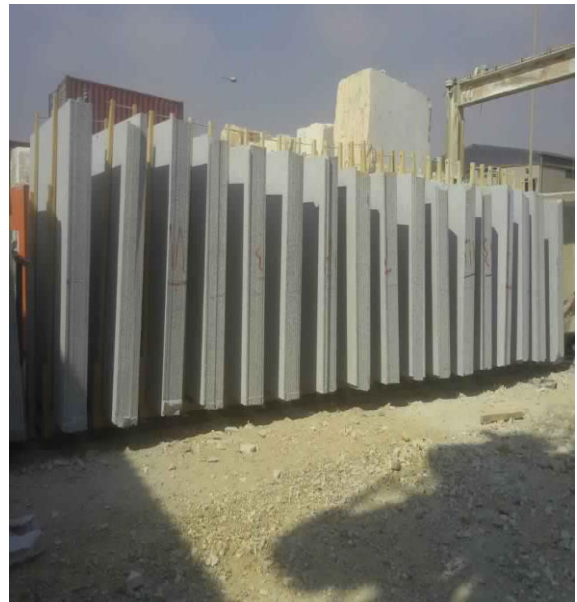
Why South Falcon?

- World-class manufacturing and product quality
- Prompt customer service
- On-time delivery and logistic planning support
- Simple and effective business experience
- Complete packaging capability
- Customized solutions
- A wide range of stones at a single point source
- Compliance with ethical and environmental standards
- One-point solutions to all forms of natural stone (blocks, slabs, tiles, countertops, vanities, furniture tops, landscaping stone...)





Packing



1) GRANITE

The word granite comes from the Latin word granum, a grain, which is an igneous rock and is formed from magma. Granite is massive, hard and tough, and therefore it has gained widespread use as a construction stone. Granite has been extensively used as a dimension stone, for flooring tiles in public and commercial buildings, and monuments. Polished granite is also a popular choice for kitchen countertops due to its high durability and aesthetic qualities. It comes in many natural colors depending on their chemistry and mineralogy.



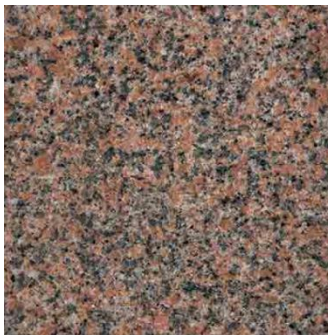
BLACK ASWAN



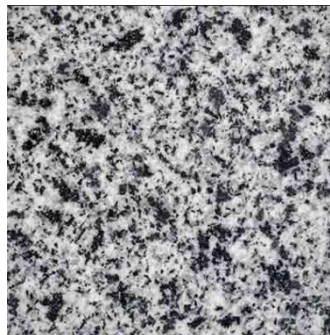
FANTASTIC WHITE



GANDOLLA



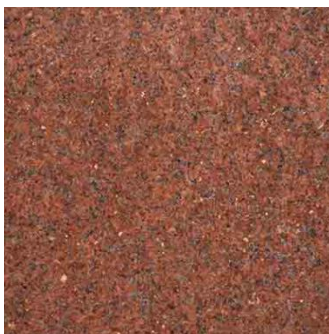
HOODY DARK



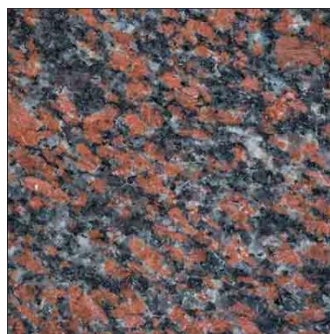
NEW HALAYEB



RED ASWAN



RED FERSAN



ROSA ELNASR



ROYAL RED



VERDI GREEN



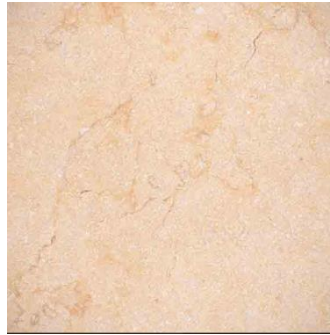
VERDI YELLOW

2) MARBLE

Marble is derived from the Latin word Marmor which comes from the Greek root "Marmarous" meaning a shining stone. Marble is a Non-foliated metamorphic rock resulting from the metamorphism of limestone. Commercially, marble is any crystalline rock composed predominantly of calcite, dolomite or serpentine, having 3-4 hardness, which can be excavated as blocks and can be sawn into marble slabs and marble tiles. Marble is used for wall cladding, roofing, flooring, and a variety of other interior and exterior applications.



CLEOPATRA LIGHT



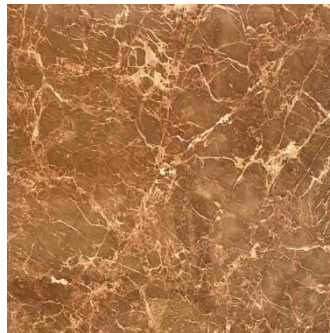
CLEOPATRA



DARK EGY GREY



DEZZERTO



EGYPTIAN EMPRADOR



FANTAZIA SILVA



ZAFFRANA BEIGE



ZAFFRANA ROSE



FANTAZIA SUNNY



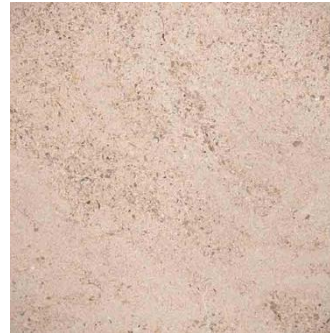
FLITTO ROSSO DARK



FLITTO ROSSO LIGHT



GALALA EXTRA



IMPERIAL



KATRINA



KHATMIA



GALALA



LIGHT EGY GREY



LIGHT NELO GREY



SUNNY DARK



TRIESTA GREY

3) LIMESTONE

Limestone is a sedimentary rock composed largely of the mineral calcite. Limestone is less resistant than most igneous rocks but more resistant than most other sedimentary rocks. Limestone is readily available and relatively easy to cut into blocks or carving that is more elaborate. It is also long-lasting and stands up well to exposure.



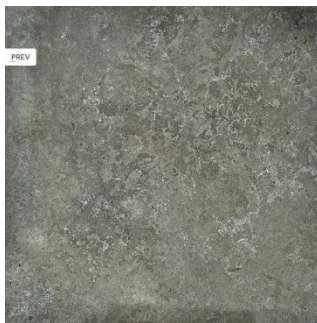
GOLDEN SINAI



**LEOPARDO
(TIGER SKIN)**



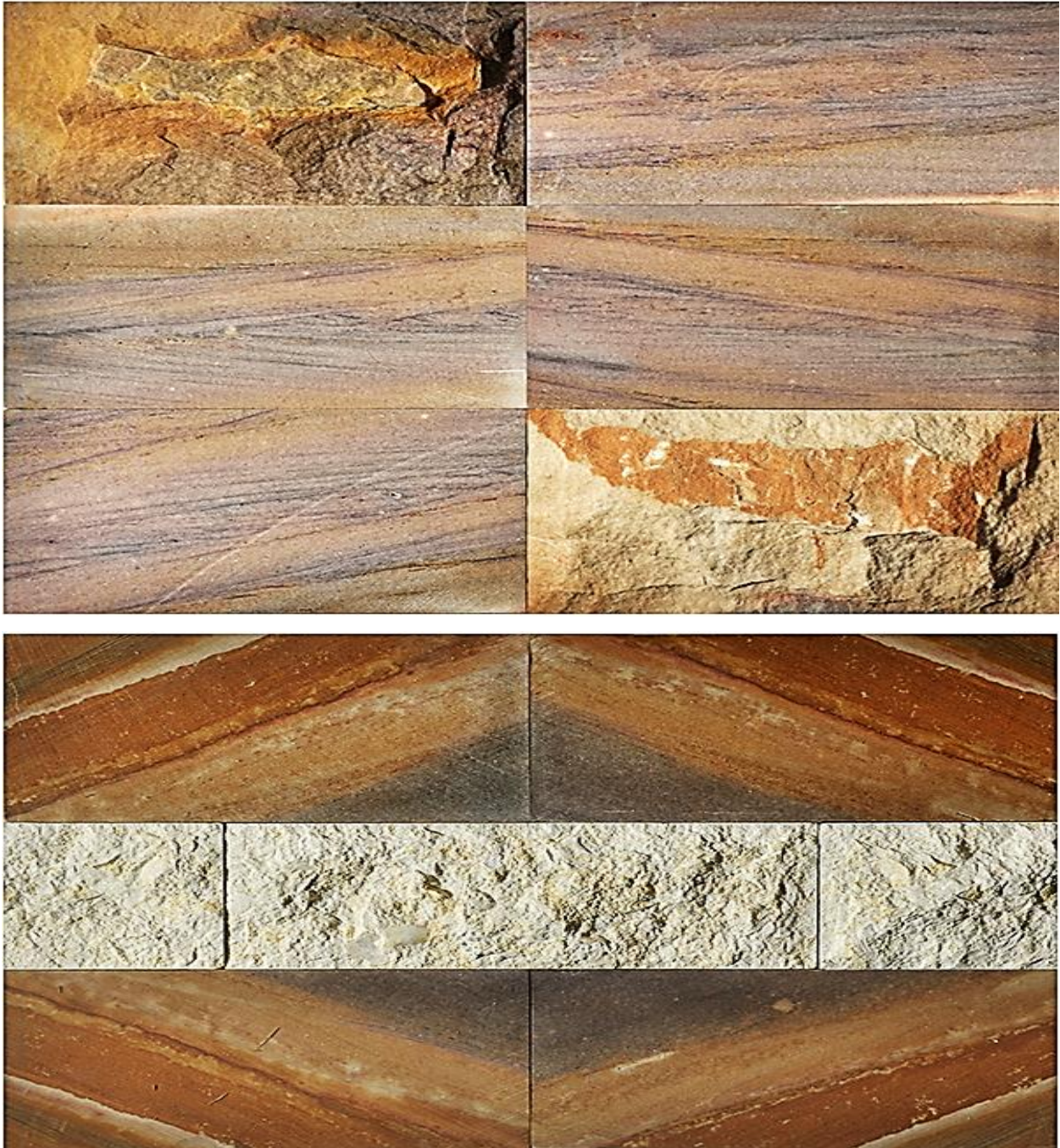
MELI BROWN



MELI GRAY

4) SANDSTONE

Sandstone is a sedimentary rock composed mainly of sand-sized minerals or rock grains. Sandstone comes in many colors but the most common are brown, gray, tan, yellow, red, and white. Sandstone is weather resistant which makes it a common building and paving material. Sandstone, when laid as building stone, gives one of the most magnificent looks.



SILICA & MINERALS



In Egypt, there are over a thousand million tons of high-quality silica sand. Which supply the glass industries, paints, foundries, chemicals, and ceramics. Sodium Silica (Solid or liquid) Used as a Raw Material in Detergents, Pulp and Paper, Ceramic Industry and manufacturing of Titanium Di-Oxide.

In the manufacturing of welding electrodes and fine chemicals such as Silica Gel and Precipitated Silica. It is also used for peroxide bleaching in textiles, as a binder in the foundry, as a drilling fluid, for soil solidification, petroleum processing, mineral beneficiation pigments, waterproofing mortars, and cement, impregnating wood in ore and water treatment.



1) Silica Sand for Water Filtration



Our product of filter sand and Filter Gravel Exported to more than 17 countries in all over the world (Japan, Philippines, Greece, Spain, Georgia, Senegal, Iraq, Georgia, Croatia, Kuwait, UAE, Algeria, Qatar, Kuwait, Sultanate Oman, Cyprus, Turkey, Malta, Libya and India). We are extracting from high-quality quarries with SiO_2 more than 96.7% which was river sand for thousands of years.

We produce and process our products in the biggest screening plants in Egypt that is why we confirm the stability of quality in long-term supplying with worldwide companies in the field of water filtration and Water Treatment.



Properties

- Full range of Grades and Practical Size from 0.200mm-350mm
- We have an international lab for following up quality insurance with each Batch
- NO radioactive substance
- SiO_2 min 96%
- Mechanical Strength of silica sand is high
- The bulk density of un-compacted Silica Sand may vary within 1400 kg/m³ to 1700 kg/m³.
- Mechanical Strength of silica sand is high

- Silica Sand Shape: is rounded.
- NO heavy metals
- NO TOXIC
- NO polycyclic Aromatic Carbons (Suitable for Portable water treatment plants and wastewater treatment).
- 100% Natural sand.
- High acid solubility resistance in HCL
- Hardness 7Moh
- No ODOR, No Dirt, No Stains
- Meets EN12904 and AWWA B100-96 and BS:910(1969).
- It is being screened and sieved into different grain sizes according to Effective sizes for each filter systems.

Applications

Filter Sand is used for filtering and cleaning:

- Portable water filters
- Pool filter
- Sewage treatment plant

Available in

we always have enough stock of each grade of filter sand. Wide varieties of Packing.

- Small bags of 25kg or 50 kg
- Big bags of 1500kg
- We customize the packing according to client requirement
- Private label can be arranged
- Bags either PP or PE or PP laminated
- Bags can be mounted on EURO pallets. We have long Experience of shipping
- Load in 20 feet for overseas shipping



2) Silica sand for Glass



The Purity of that White Silica sand exceeds 99.3%. White Silica sand can be used for Manufacturing in different types of glass.

The Highest Content of SiO_2 (Silicon Dioxide) and Lowest Iron Content is the main Element in Focusing and Comparison in Silica sand, as well as Al_2O_3 .

Properties

1. Silica Sand 150MUL

SiO₂	99.3-99.5%
Fe₂O₃	0.0150
Al₂O₃	00.20-0.30
TiO₂	0.02500
CR₂O₃	0.0020
Moisture	0.40
Color	White
Grain Shape	Semi-round- Angular
Bulk Density	(1400 – 1570 kg/m³)
Specific Gravity	2.2 – 2.5
Turbidity	<100
Hardness	7 Moh
Attrition Loss	below 1% in 100 hours backwashing
Acid Solubility	below 2% [24hours in 20% Hal]

2. Silica Sand 250-300MUL

SIO2	99.3-99.5%
FE2O3	0.0150
AL2O3	00.20-0.30
TIO2	0.02500
CR2O3	0.0020
Moisture	0.40
Color	White
Grain Shape	Semi-round- Angular
Bulk Density	(1400 – 1570 kg/m3)
Specific Gravity	2.2 – 2.5
Turbidity	<100
Hardness	7 Moh
Attrition Loss	below 1% in 100 hours backwashing
Acid Solubility	below 2% [24hours in 20% Hal]

Applications

Manufacturing in different types of glass like

- Float glass
- Glass Sheets
- Glassware
- Tableware
- Crystal
- Bottles
- Container Glass

Available in

- Stored and exported in Bulk shipment
- Vessel of 5000-25000 M tons Max can enter the port draft
- For orders of 1000 tons or less can be packed in big bags of 1250kg-1500kg
- Containers of 20 feet can be stuffed with 25-27 tons

3) Silica Flour "Silica Powder"



Silica Flour is produced from high purity Silica Sand. The particle size distribution is subjected to precise quality control procedures. All Silica Flour grades are processed with adherence to ISO and internal quality assurance programs. The result is chemical purity and consistently uniform particle size distributions for predictable results supported by reliable services.

Properties

Silica Flour available in forms of

- Granular Particles (600 – 800 microns)
- Powder (25- 45 (cut out) - 63 - 74 - 100 – 150 – 300) microns

Applications

- Fiberglass
- Sodium Silicate
- Glaze
- Frit
- Enamel
- Ceramic
- Porcelain
- Sanitaryware
- Coating
- Epoxy
- Fibre Cement
- Solar Panel

Available in

- Jumbo bags

4) Quartz Powder



Quartz Powder is high purity quartz sand which has been ground to the desired particle size and classified. This product can be used as a filler in a variety of applications. The particle size distribution is subjected to precise quality control procedures. All Silica Flour grades are processed with adherence to ISO and internal quality assurance programs. The result is chemical purity and consistently uniform particle size distributions for predictable results supported by reliable services.

Properties

Quartz Powder available in forms of

- Granular Particles (10 mm)
- Powder (40- 63 - 74 - 100 – 150 – 300 – 600 – 800 - 1000) microns

Applications

- Ferro Silicon
- Electronics
- Semi-Conductors
- Oil Drilling
- Optical Fibre
- Solar Panel ...etc

Available in

- Jumbo bags

5) Feldspar



South Falcon supplies Feldspar powder is produced from high purity Pot. Feldspar. The particle size distribution is subjected to precise quality control procedures. All Pot Feldspar powder grades are processed with adherence to ISO and internal quality assurance programs. The result is chemical purity and consistently uniform particle size distributions for predictable results supported by reliable services.

Properties

Pot. Feldspar available in forms of

- Granular Particles (10 mm)
- Powder (45 – 63 - 74 – 100 – 150 – 300 – 600 - 800 – 1000) microns

Applications

- Glaze
- Frit
- Enamel
- Ceramic
- Porcelain
- Sanitaryware
- Glass
- Lamp...etc

Available in

- Jumbo bags

6) Calcite Lumps



South Falcon Supplies high purity calcite lumps with high whiteness; we are able to supply any bulk quantity on regular basis. Calcite is a calcium carbonate mineral (minerals containing CO₃) that is usually white. It is used after grinding to powder form as a filler in many industries. Our main buyers are calcium carbonate powder producers who are looking for high purity and high brightness calcite.

Properties

Molecular Formula	caco3
Density	2.7 Gram per cubic meter (g/m3)
Storage	Room Temperature
Classification	Inorganic Chemicals
Chemical Name	Calcium carbonate lumps
Grade	Industrial Grade

Applications

- Industrial
- Plastic
- Rubber
- Paints

Available in

- 50 kg export quality PP bags

7) Limestone Granules/Powder Feed Grade



We are an exporter of excellent quality Limestone Granules/Powder for Animal Feed. Calcium plays many essential roles in animal and poultry nutrition. In general, it is required for: proper development of bones and teeth, regulation of heartbeat and blood clotting, muscle contraction and nerve impulses, enzyme activation and hormone secretion, eggshell formation and quality, reproductive functions (uterine retraction), and milk production, it is the most abundant mineral found in the body, and adequate dietary levels of calcium are required daily. This Limestone granule is tested on various parameters of quality in order to deliver the perfect range at the clients' end. Our calcium carbonate (CaCO_3) is an ideal choice because of its purity, high calcium content and high bioavailability.

Properties

Pot. Feldspar available in forms of

- Granular Particles (from 1 to 3 MM, from 2-3 MM and from 2- 4 mm)
- Powder (80, 250, and 325 mesh)

Applications

- Feed industry and other applications

Available in

- 50 kg export quality PP bags

CERAMIC & PORCELAIN



Our business is determined to deliver a varied selection of the world's top brands in ceramic and porcelain. We work hard on catering on all price ranges as an attempt to improve the quality of taste of our customer while creating a long-term relationship for all impacted parties by the industry.

1) Our Brands



All products are complying with the international, regional and local standards for ceramic and porcelain such as:

- International Standard ISO 13006.
- Egyptian Standard E.S 3168.
- Saudi Arabian standard SASO 1031.

2) Applications

Public Spaces



Shopping Centers



Museums



Airports



Subways



Outdoor



Indoor



Bathroom



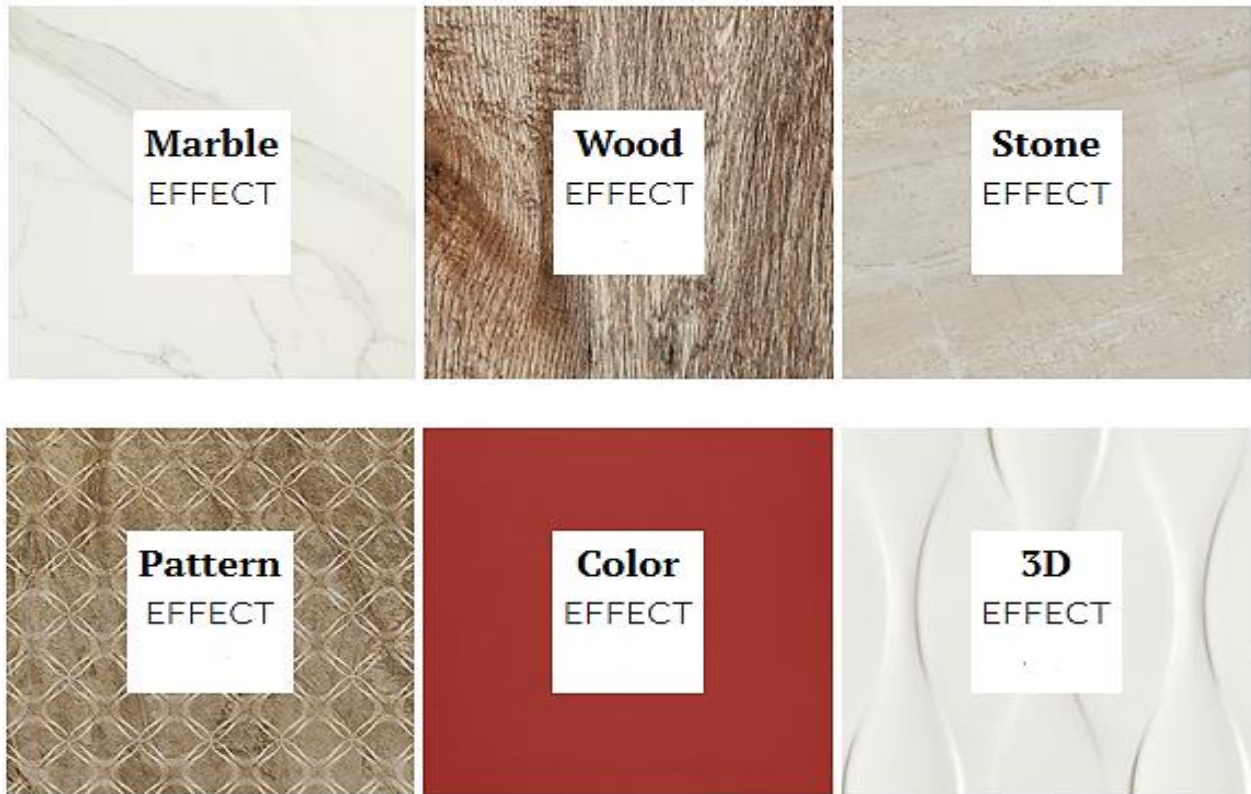
Kitchen



Bedroom



3) Surface Effects



4) Sizes

15x120 c.m	25x75 c.m
15x60 c.m	30x120 c.m
15x70 c.m	30x60 c.m
20x50 c.m	50x50 c.m
20x60 c.m	60x120 c.m
25x50 c.m	60x60 c.m
25x60 c.m	25x75 c.m

5) 2 Cm Tile



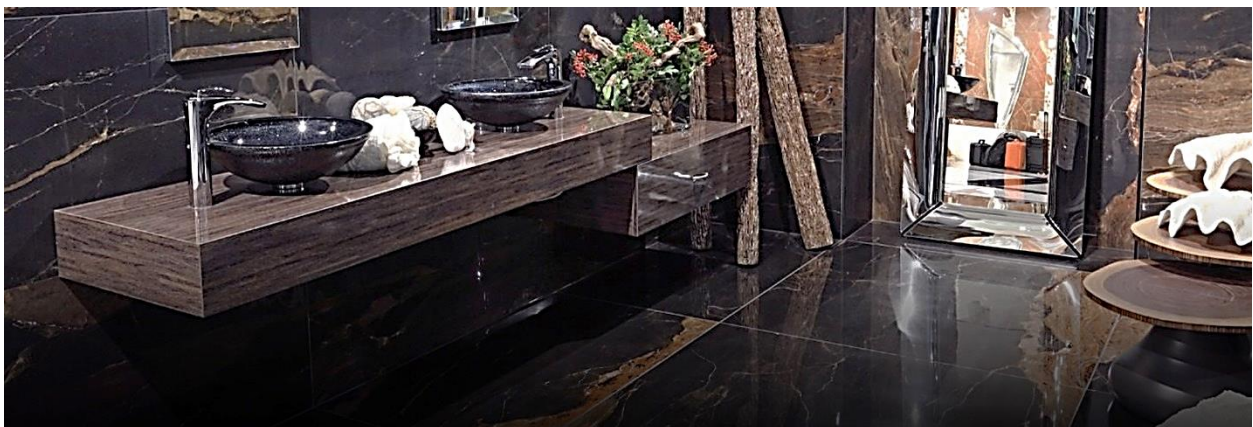
Inspired by nature, the 2-cm tile exhibits a marvelous blend of the finest stoneware materials, creating a well-structured porcelain tile that is lavished in different earthen colors and textures.

It conjures up an exceptional feeling of seriousness and precision due to its distinctive architectural characteristics. Thanks to the ethereal and artistic appearance, the 2-cm tile is the ultimate choice for projects.



6) Extreme Porcelain

SF also provides the new XXL 120x120 cm. The range of sizes is completed by modular formats 60x120, 30x120, 15x120, 15x90 plank and 80x80 cm, thus enhancing the application possibility of this extraordinary product. XXL creates an effect of continuity that enlarges every ambiance in any residential or commercial application. Your house will look bigger and wider than ever.





SOUTH FALCON